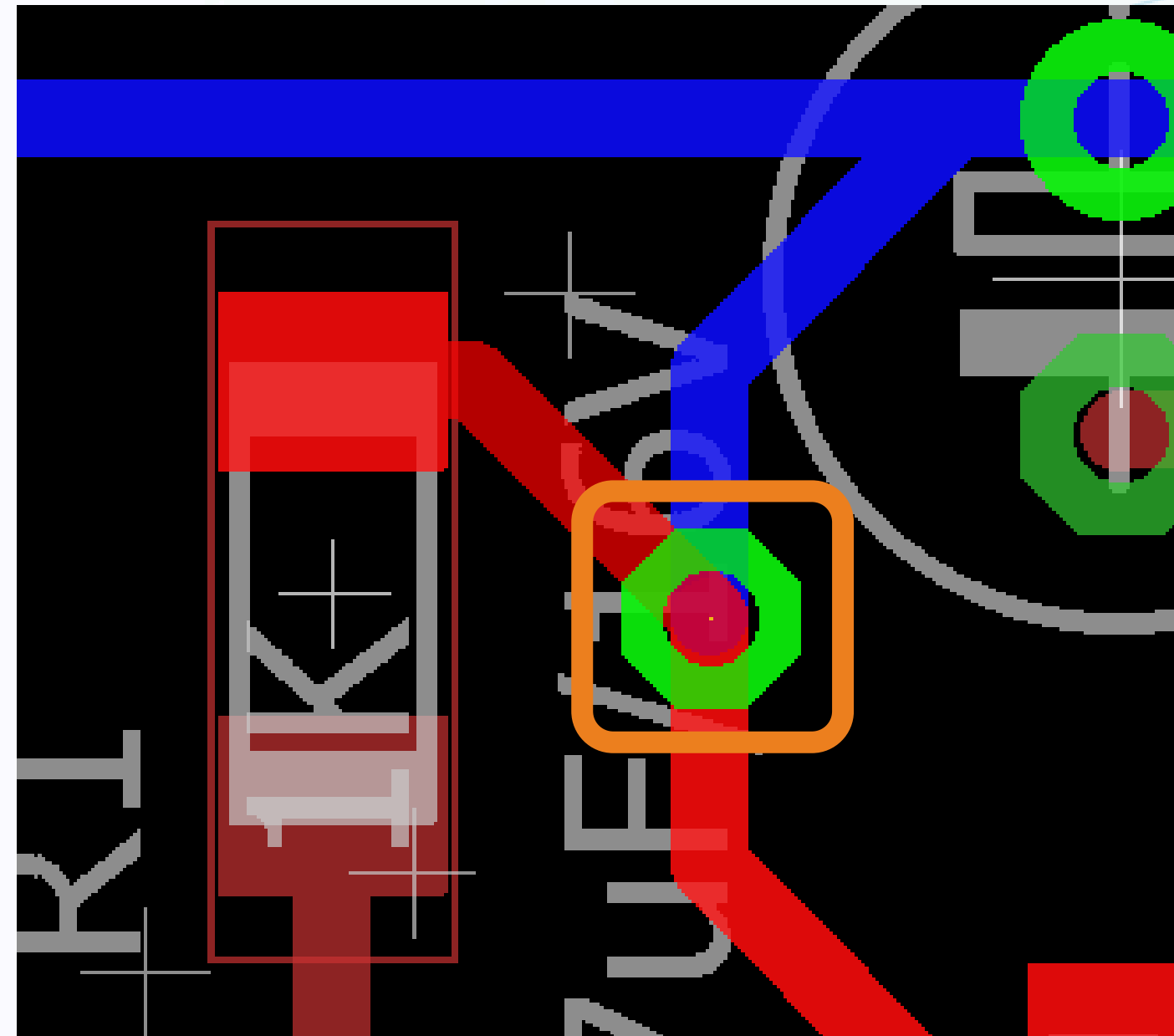


# UNIT IV

## ROUTING AND DESIGN RULES

#enthutech®

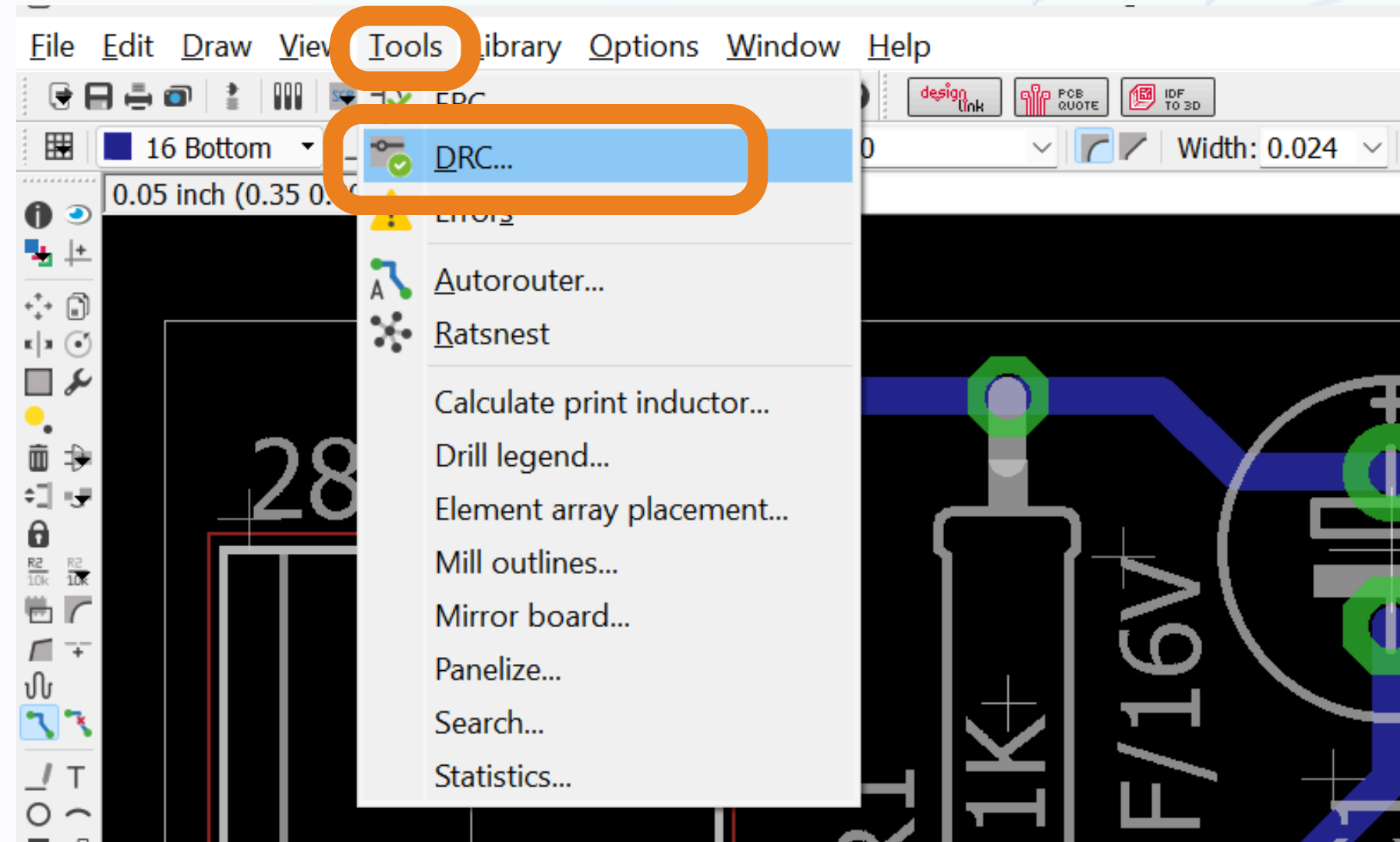
# Via



**Via to connect the two  
layer**

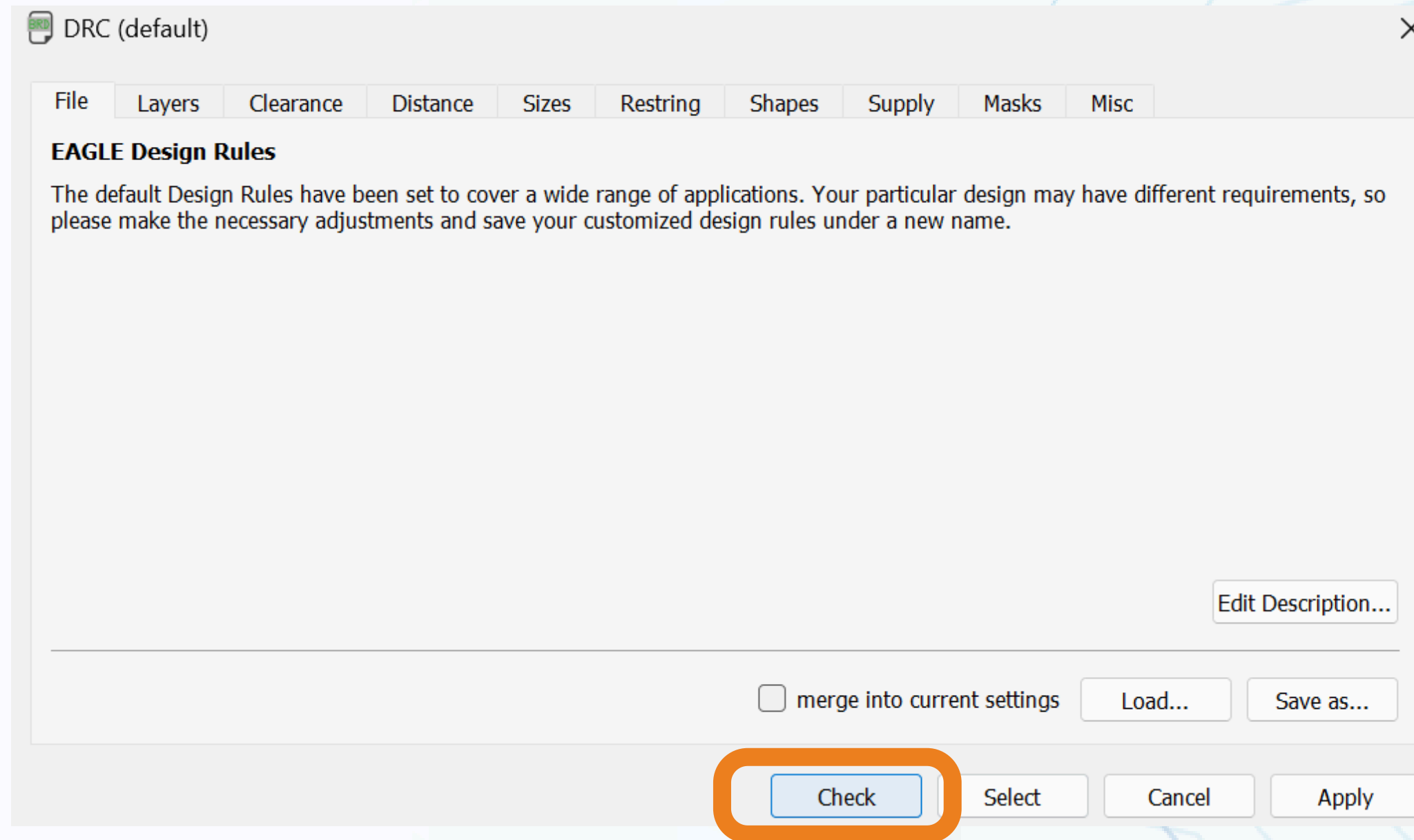
#enthutech®

# DRC - Design Rule Check

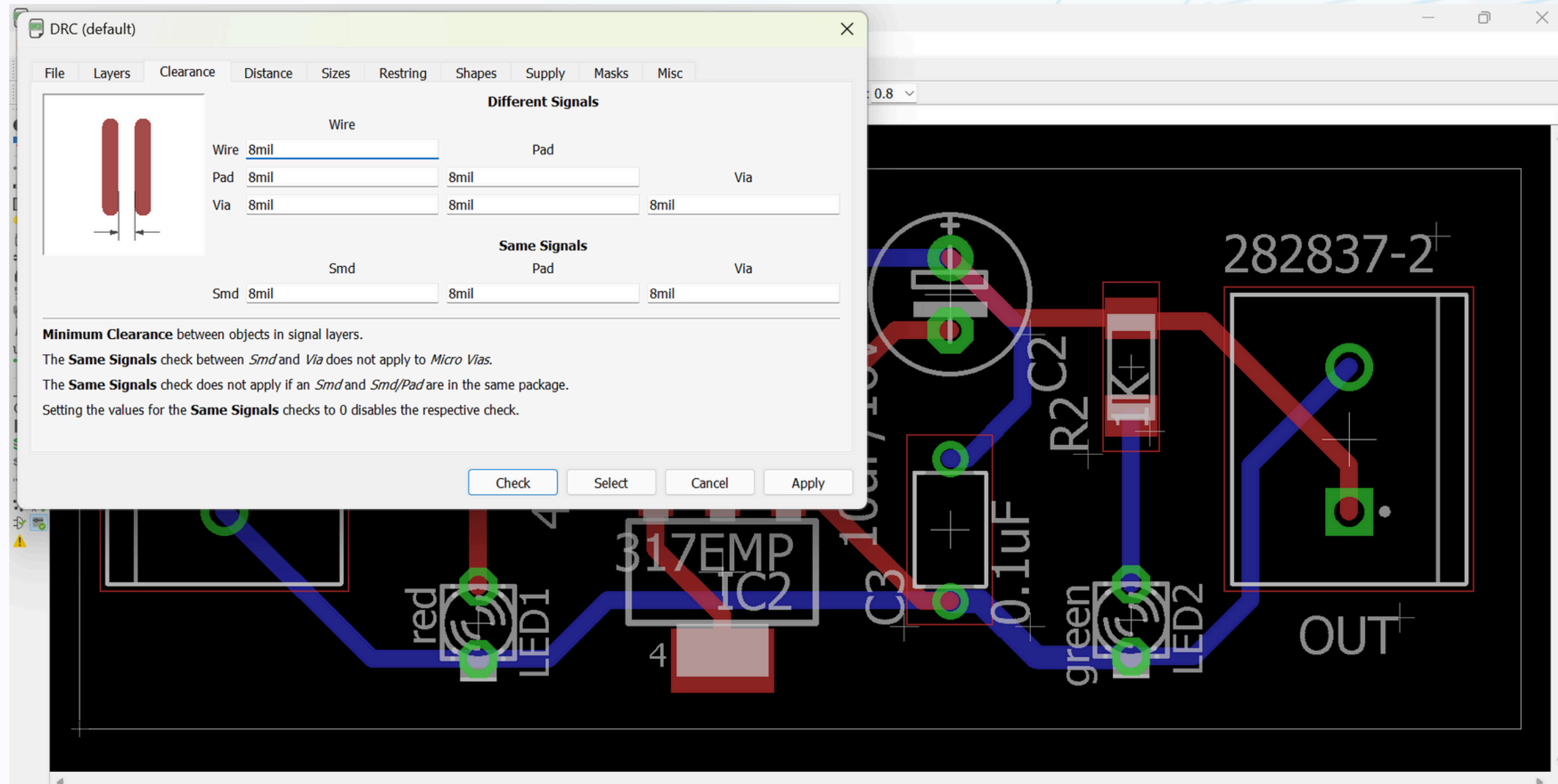


**Click > Tools > DRC**

# DRC - Design Rule Check

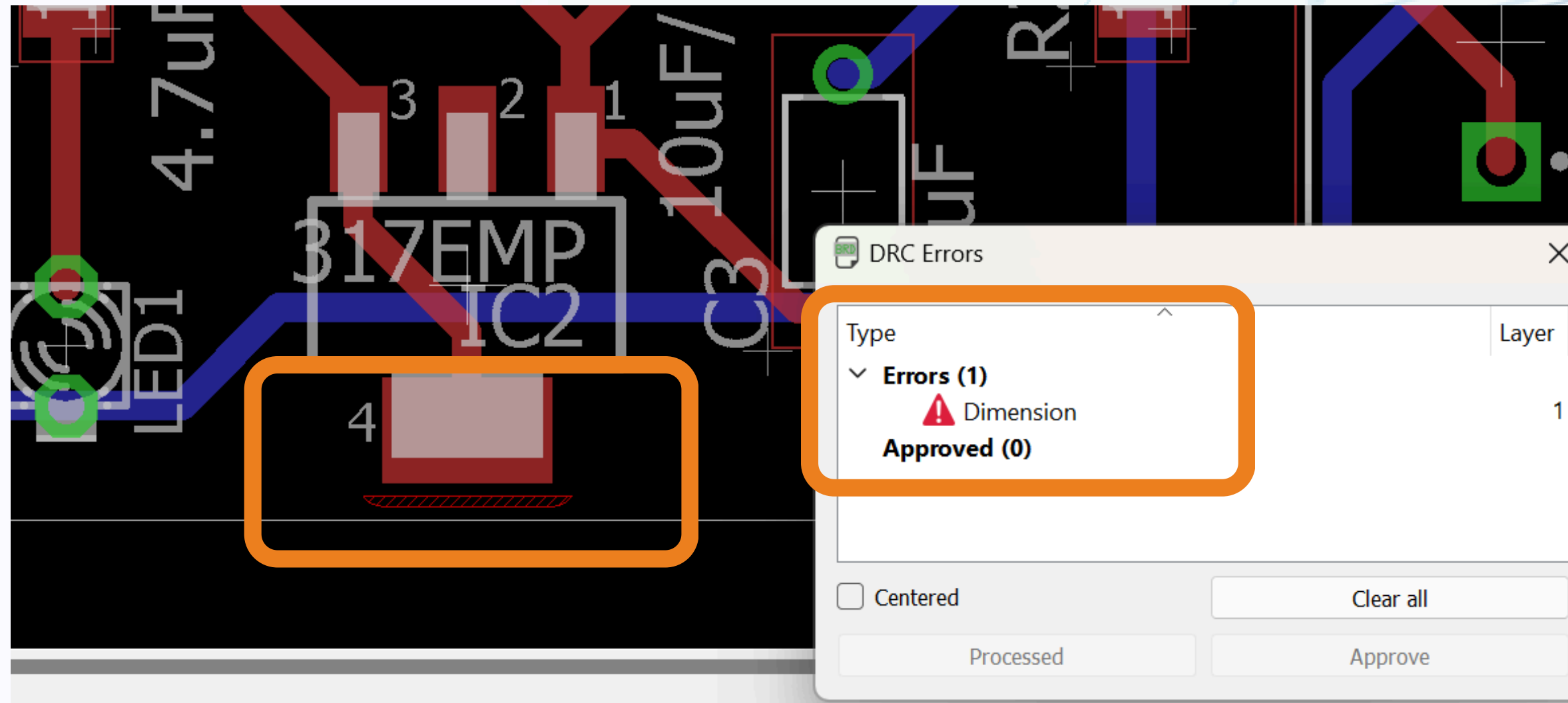


# DRC - Design Rule Check



#enthutech®

# DRC - Design Rule Check



**Insufficient gap between border  
and components**

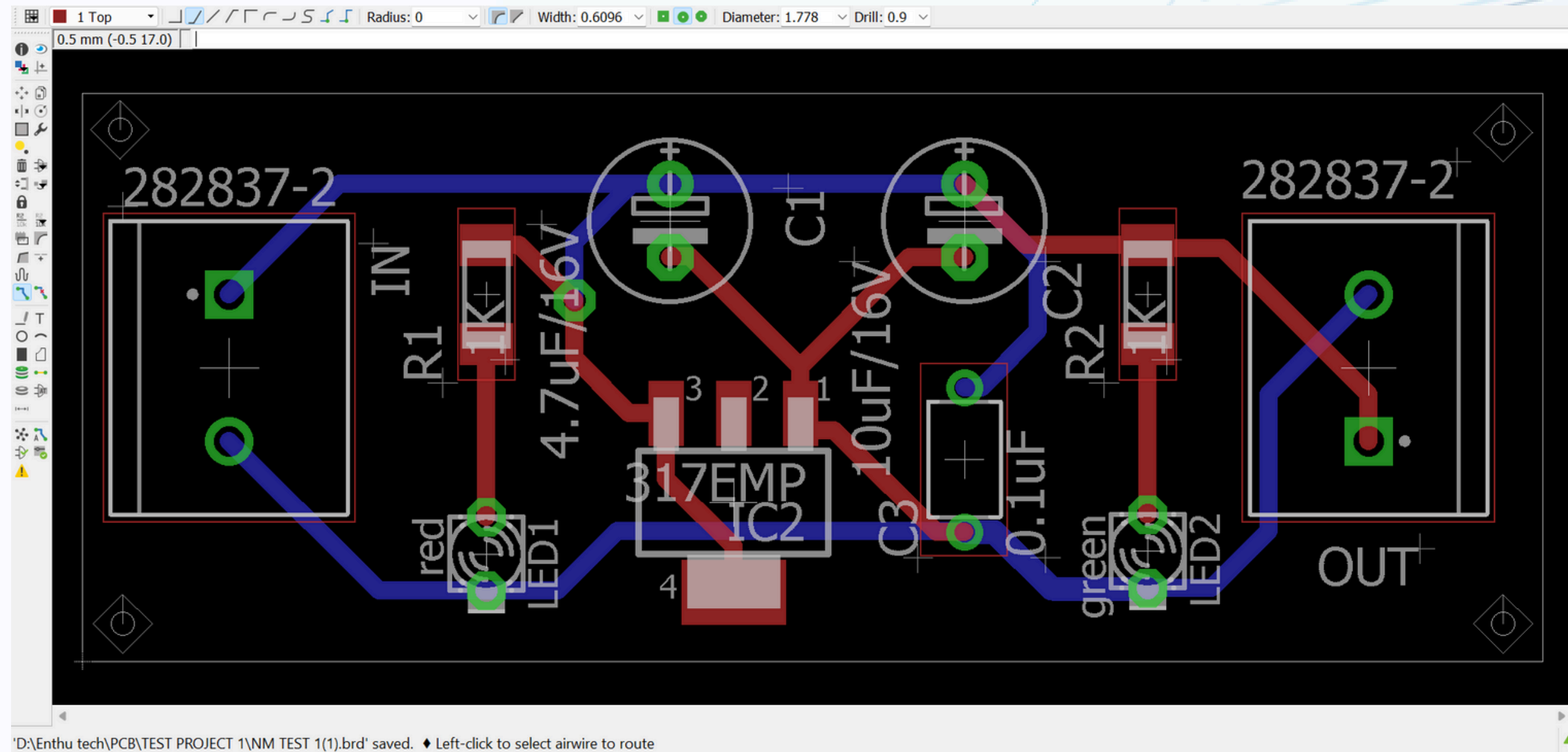
# DRC - Design Rule Check



DRC: No errors. ♦ Left-click to select object to move

#enthutech®

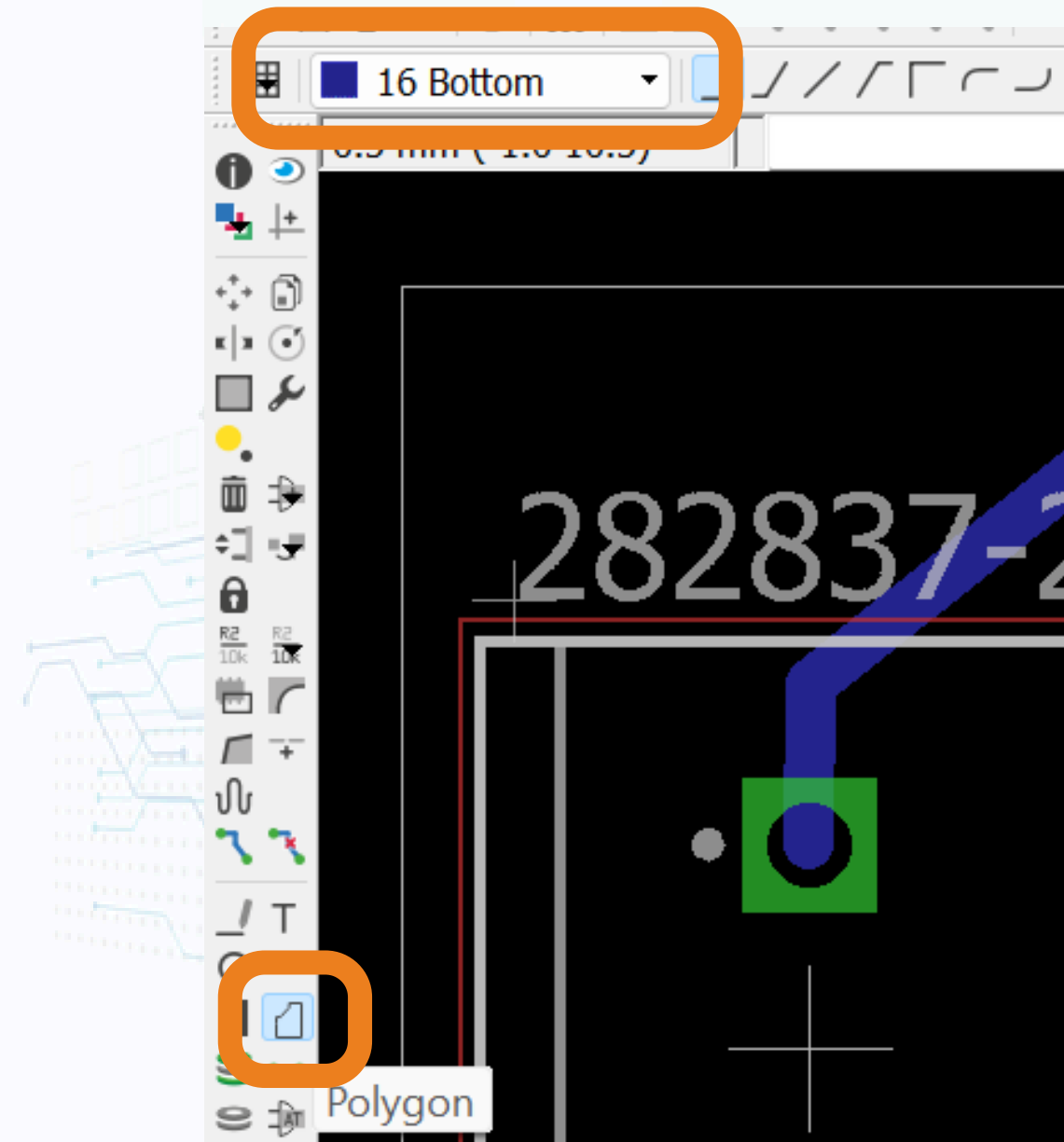
# BOARD LAYOUT



#enthutech®

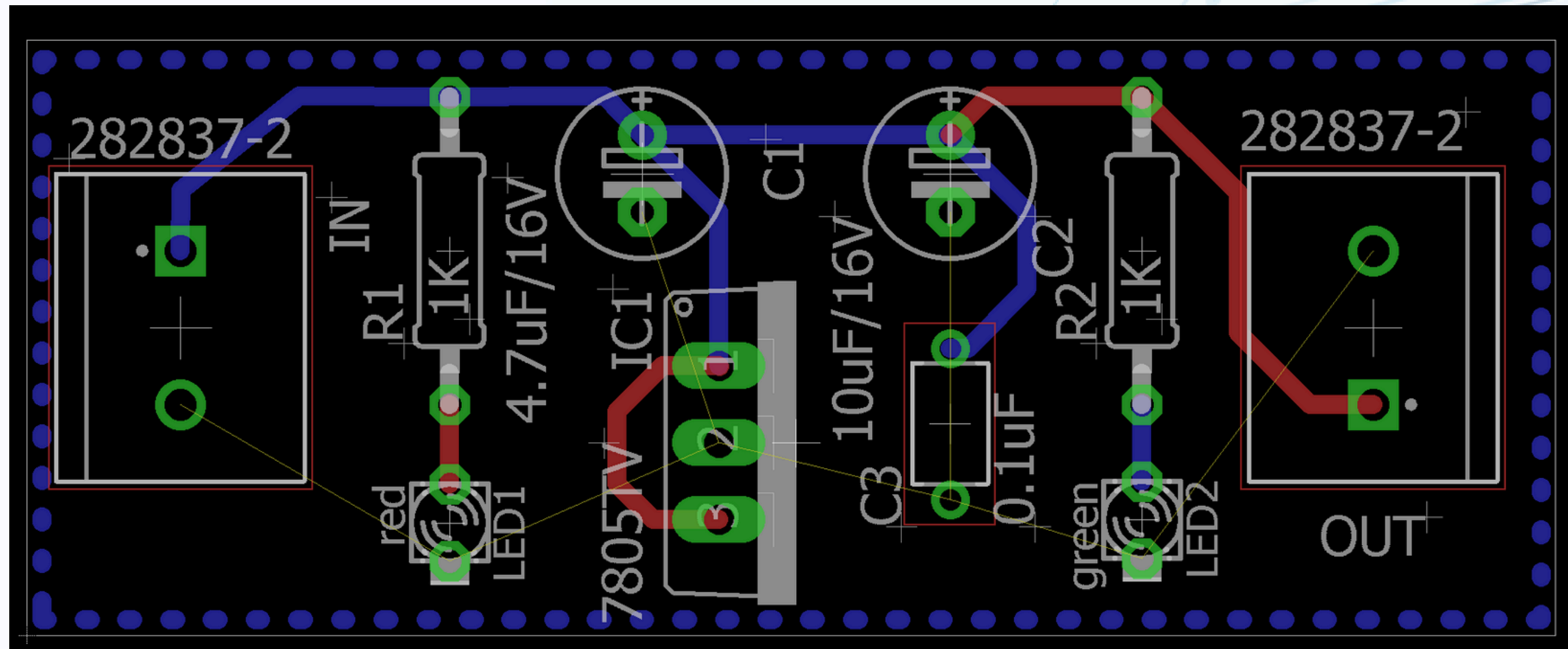


# GROUND PLANE



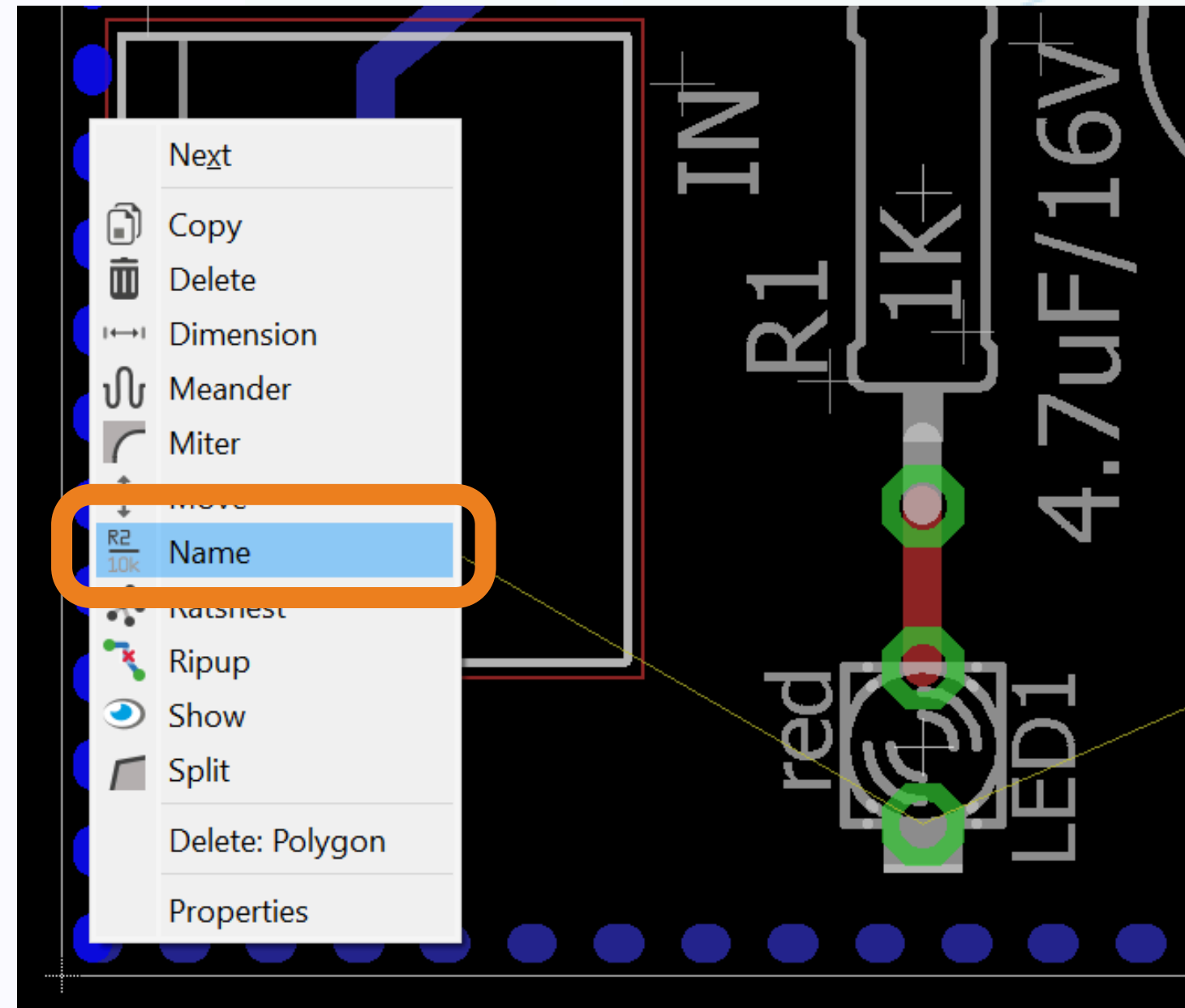
Select > Polygon >  
Layer

# Polygon Pour



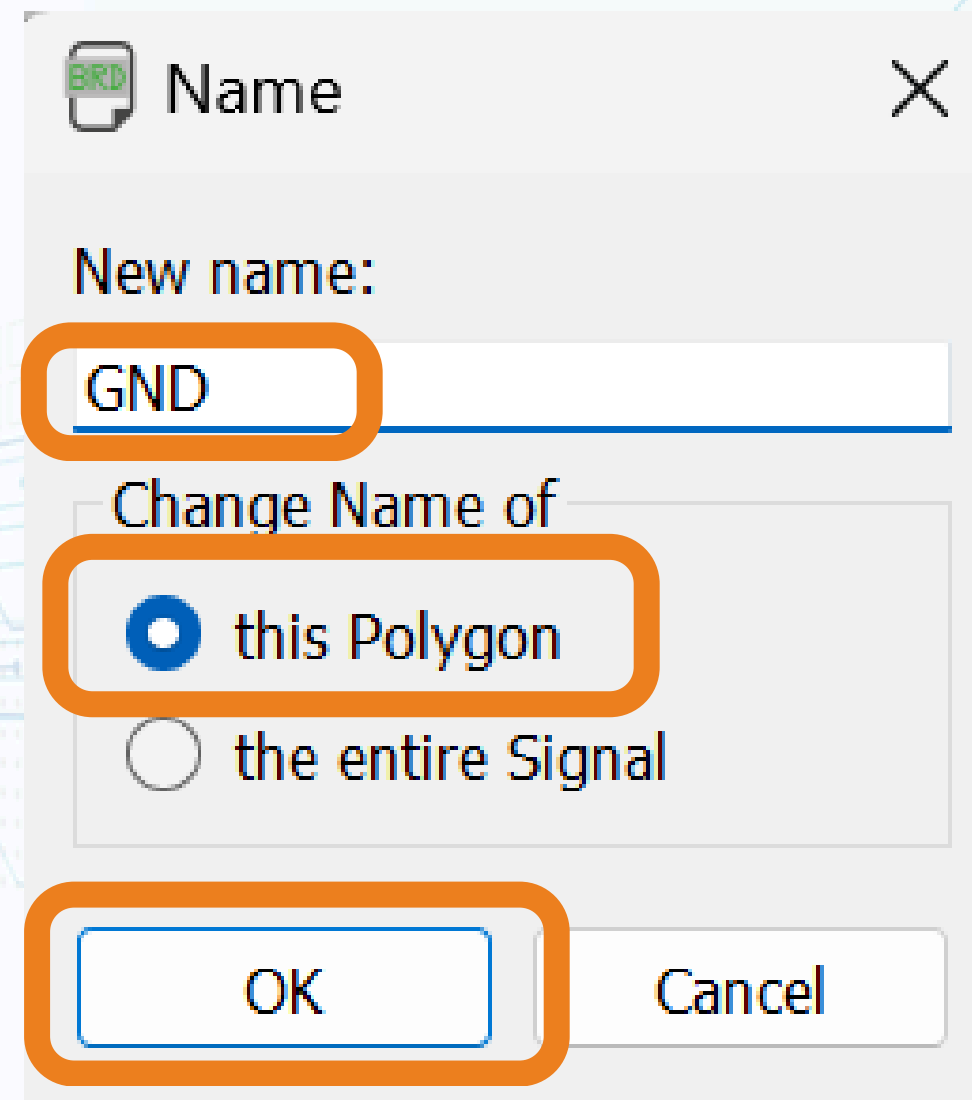
Create a layer for the  
polygan pour

# Polygon Pour



Select > Name

# GROUND PLANE



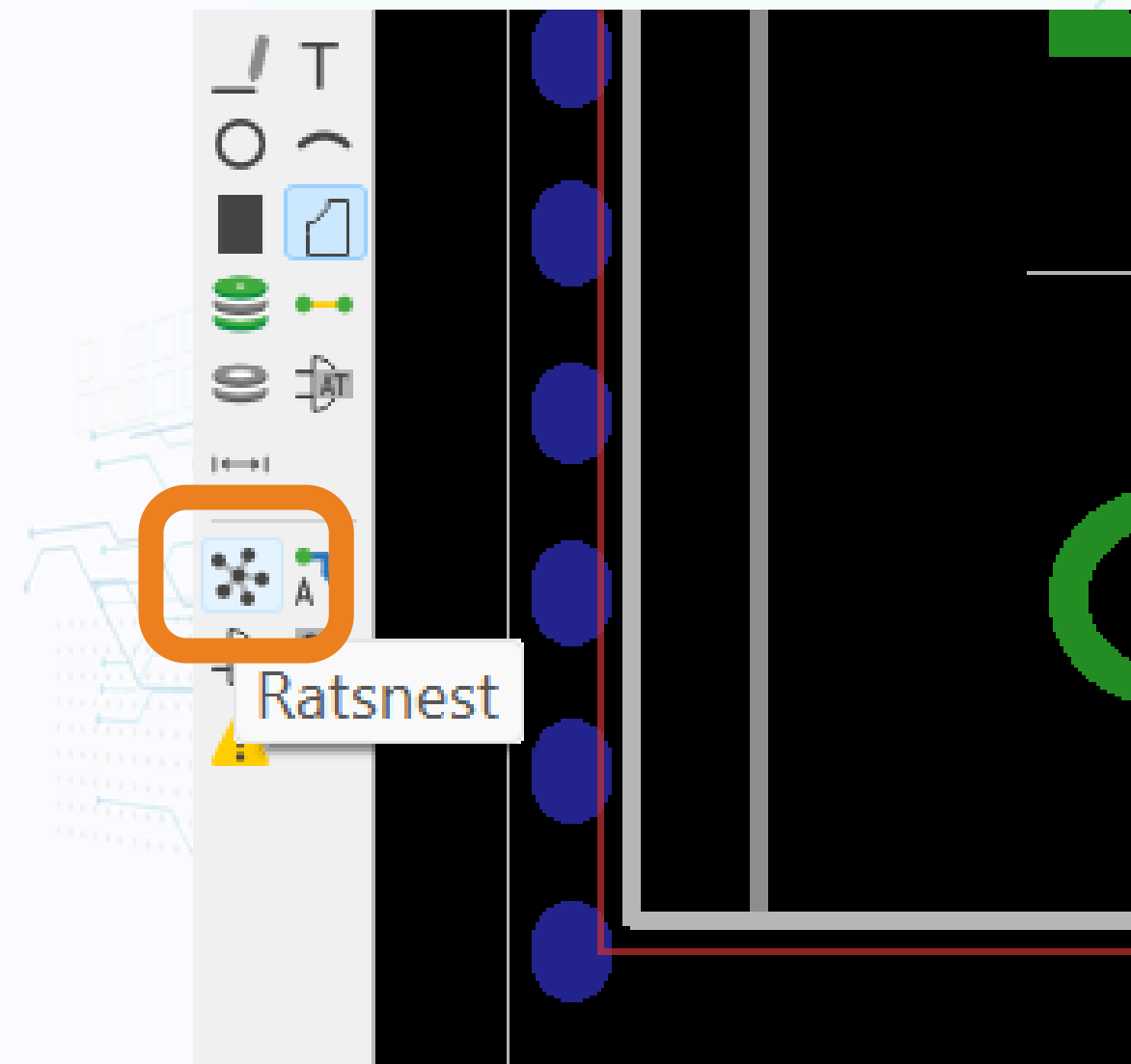
A screenshot of a software dialog box titled "Name" with a close button (X) in the top right corner. The dialog box contains the following elements:

- A label "New name:" followed by a text input field containing the text "GND".
- A label "Change Name of" followed by two radio button options:
  - A selected radio button (indicated by a blue dot) next to the text "this Polygon".
  - An unselected radio button next to the text "the entire Signal".
- Two buttons at the bottom: "OK" and "Cancel".

Orange rectangular boxes are drawn around the "GND" text field, the "this Polygon" radio button option, and the "OK" button.

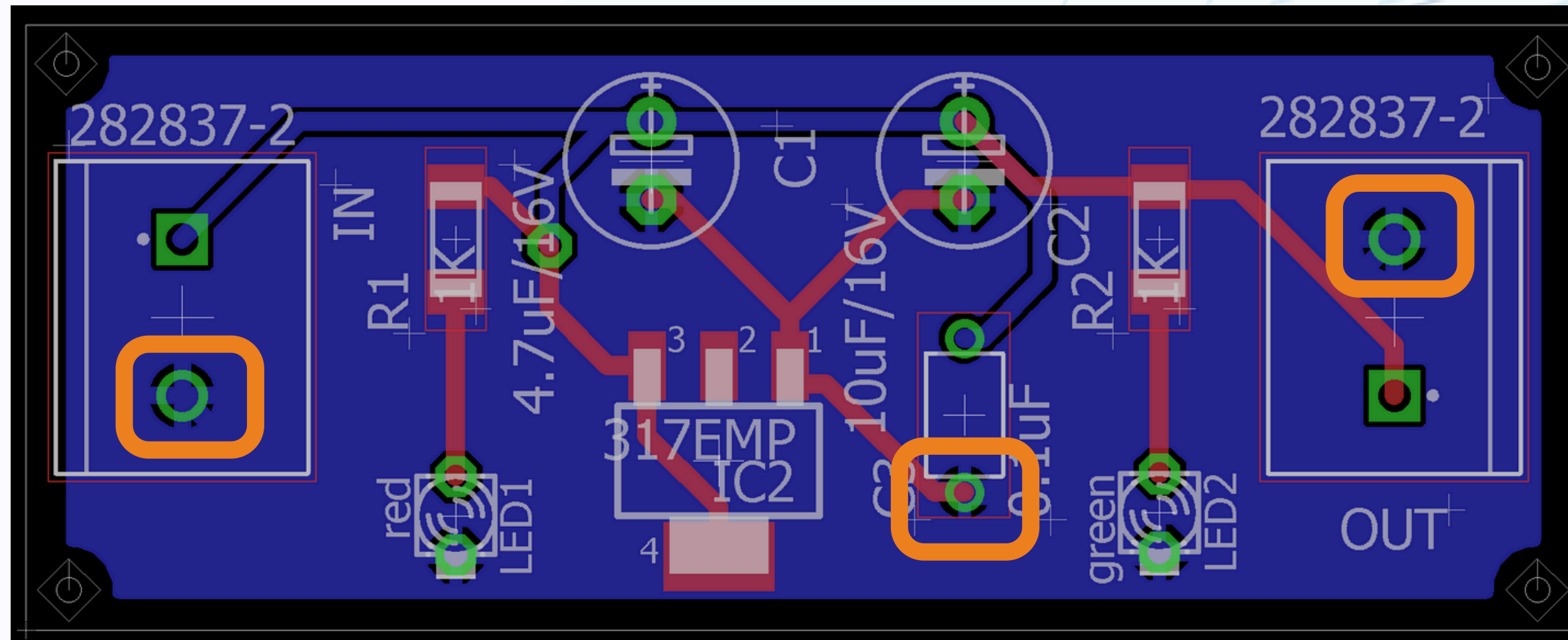
**GND > this Polygon >  
OK**

# GROUND PLANE



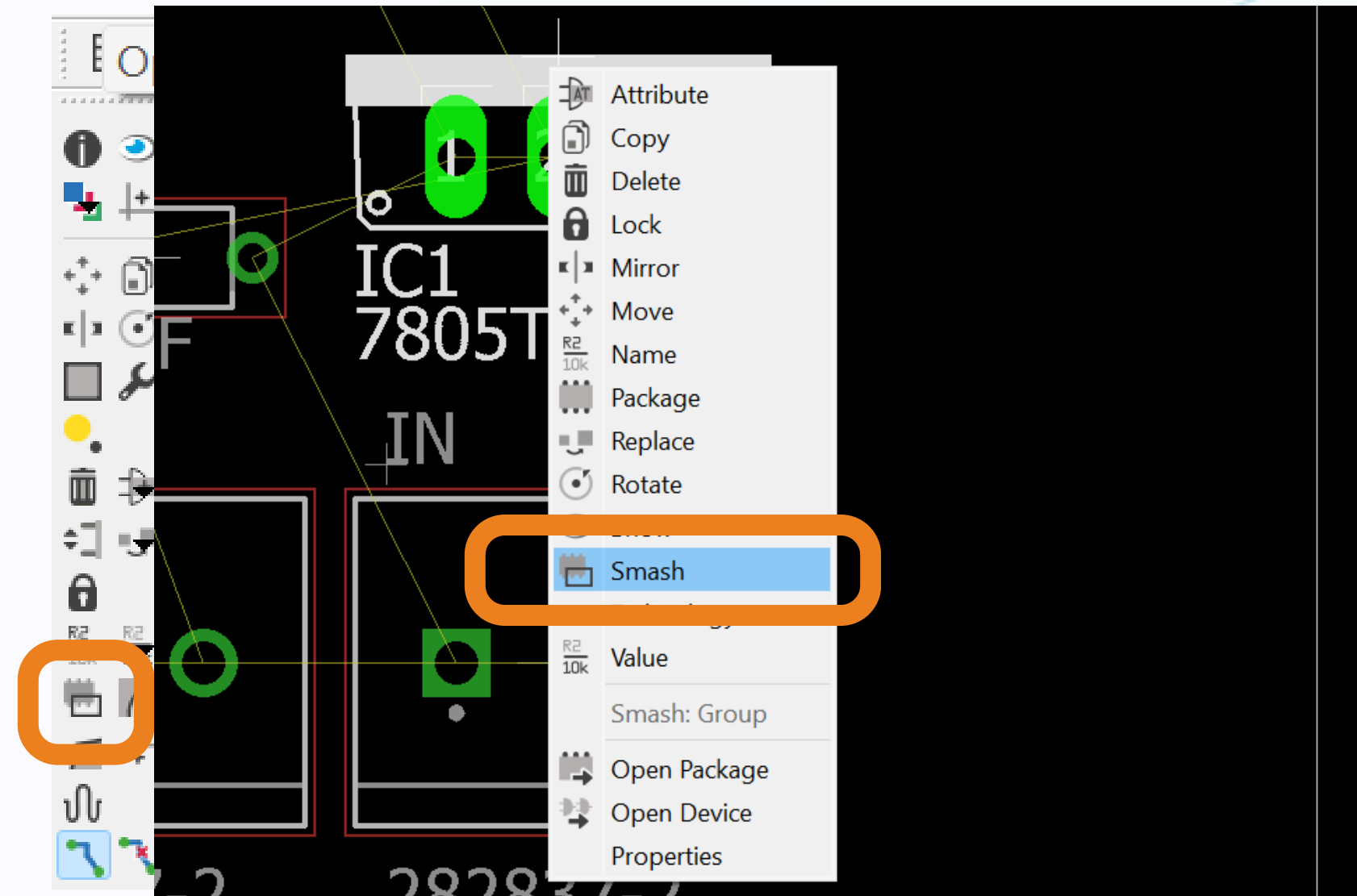
**Select > Ratsnest**

# GROUND PLANE



**All the GND terminals are connected  
to the copper pour**

# Label Arrangement



**Smash tool to configure the  
Name & Value of a components**

# Thank You

#enthutech<sup>®</sup>