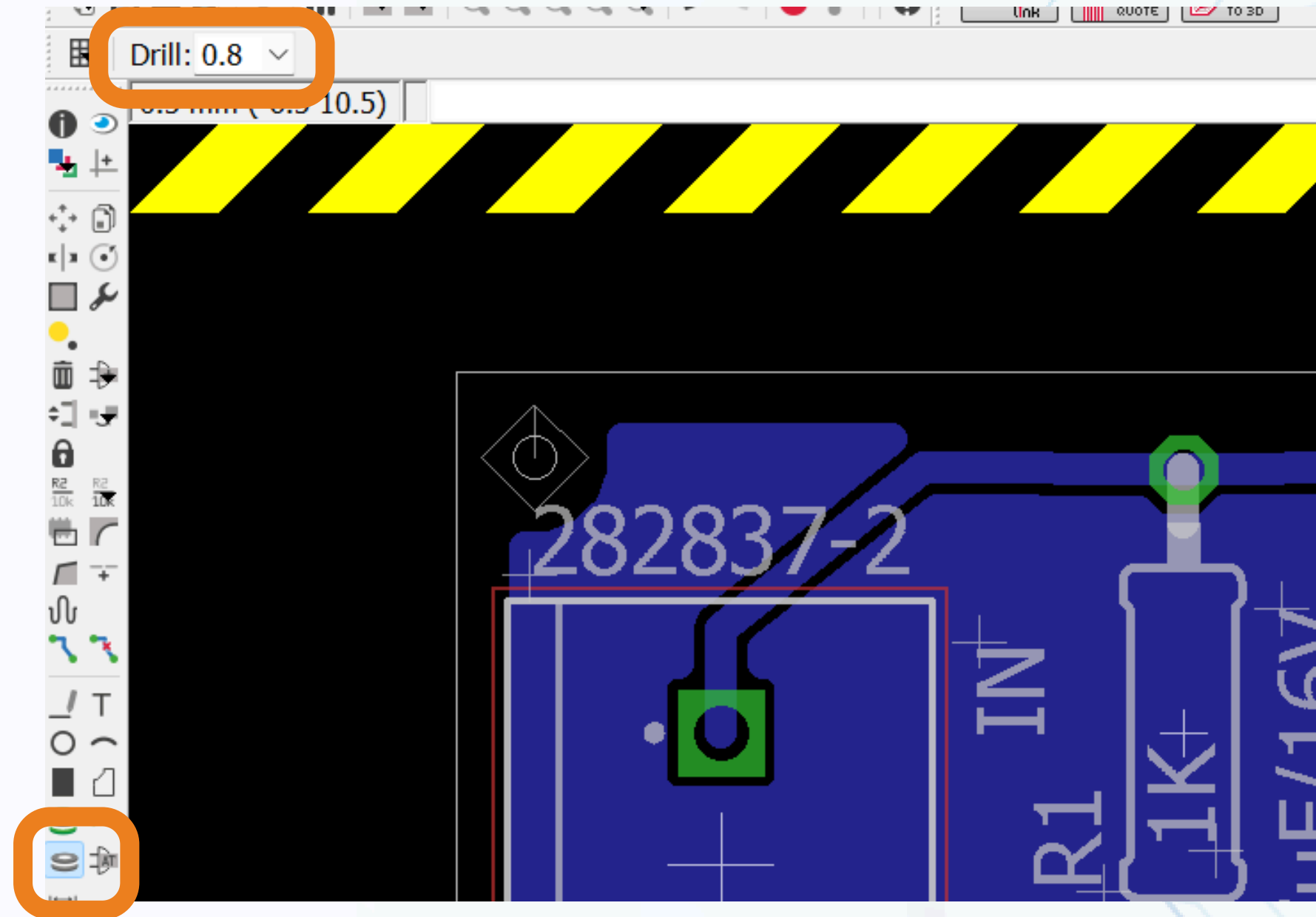


UNIT V

Finalization AND Export

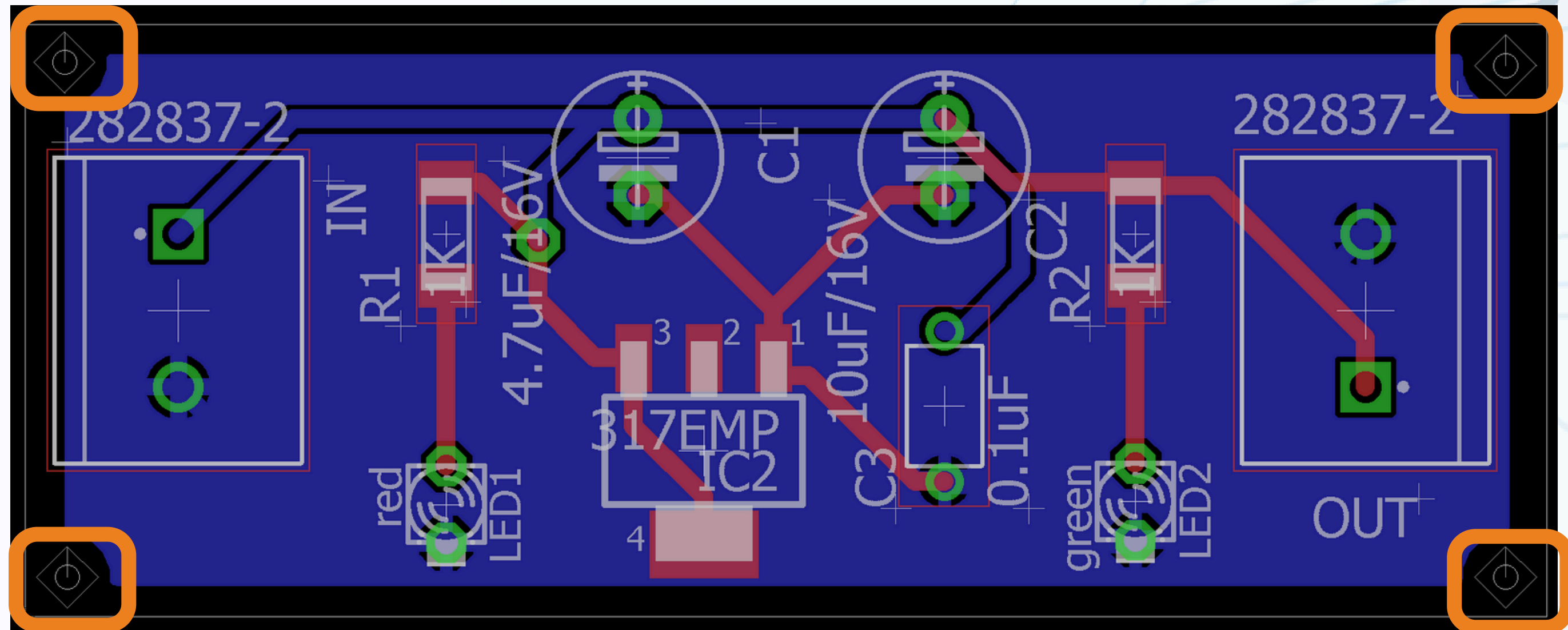
#enthutech®

Mounting Holes



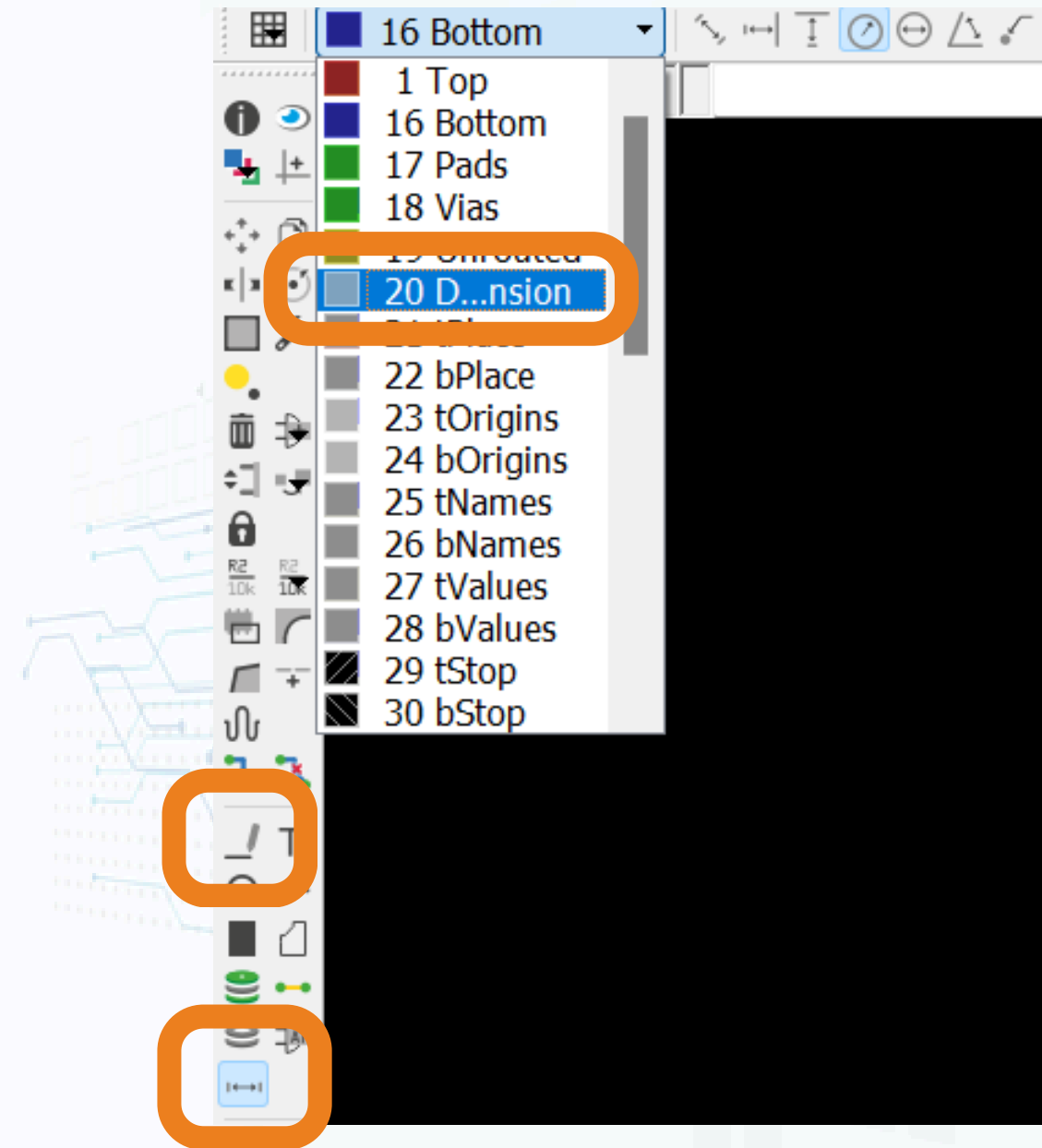
Select > Holes > Drill size

Mounting Holes



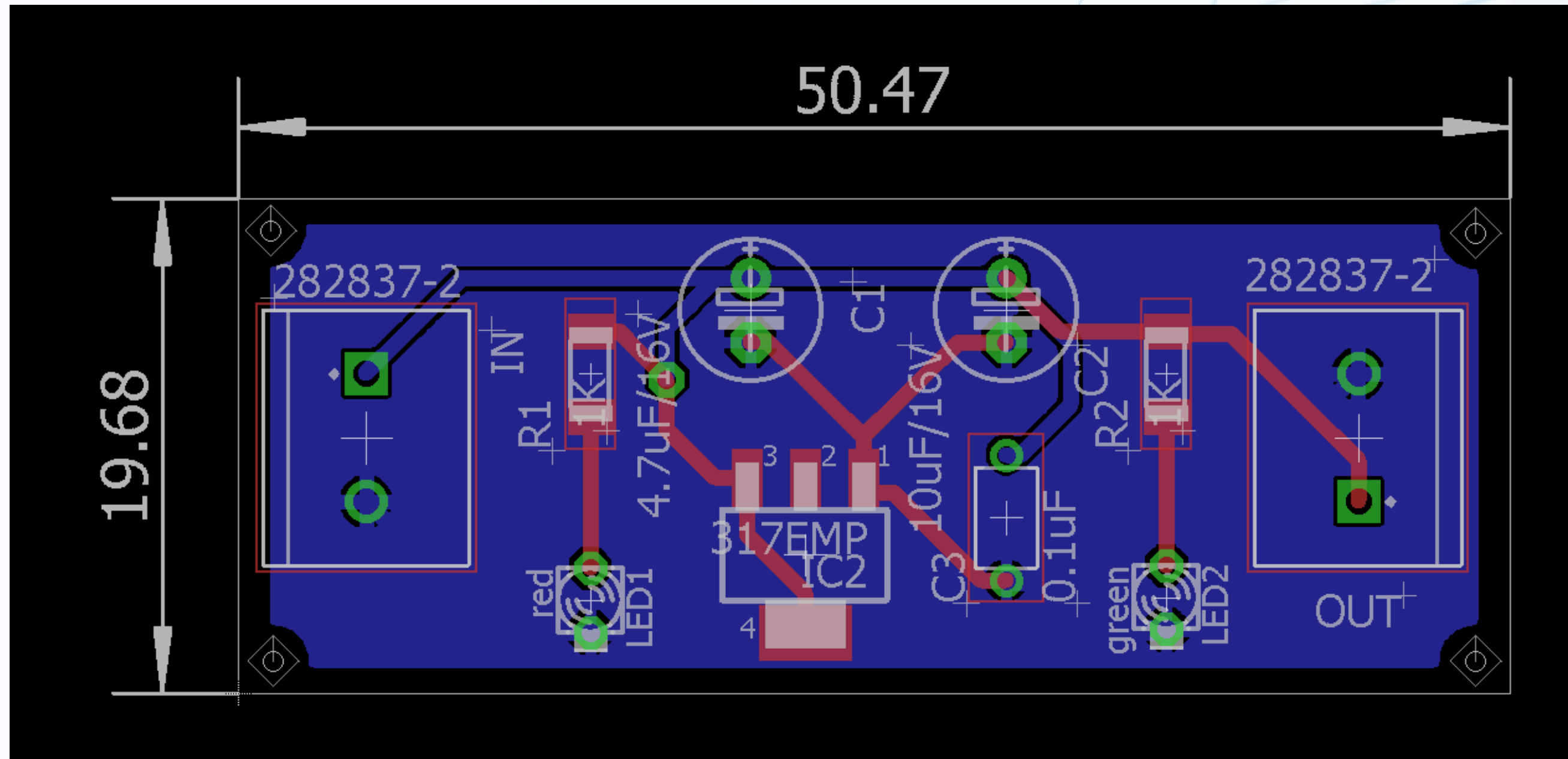
Place the mounting holes on the board corners

BOARD DIMENSIONS



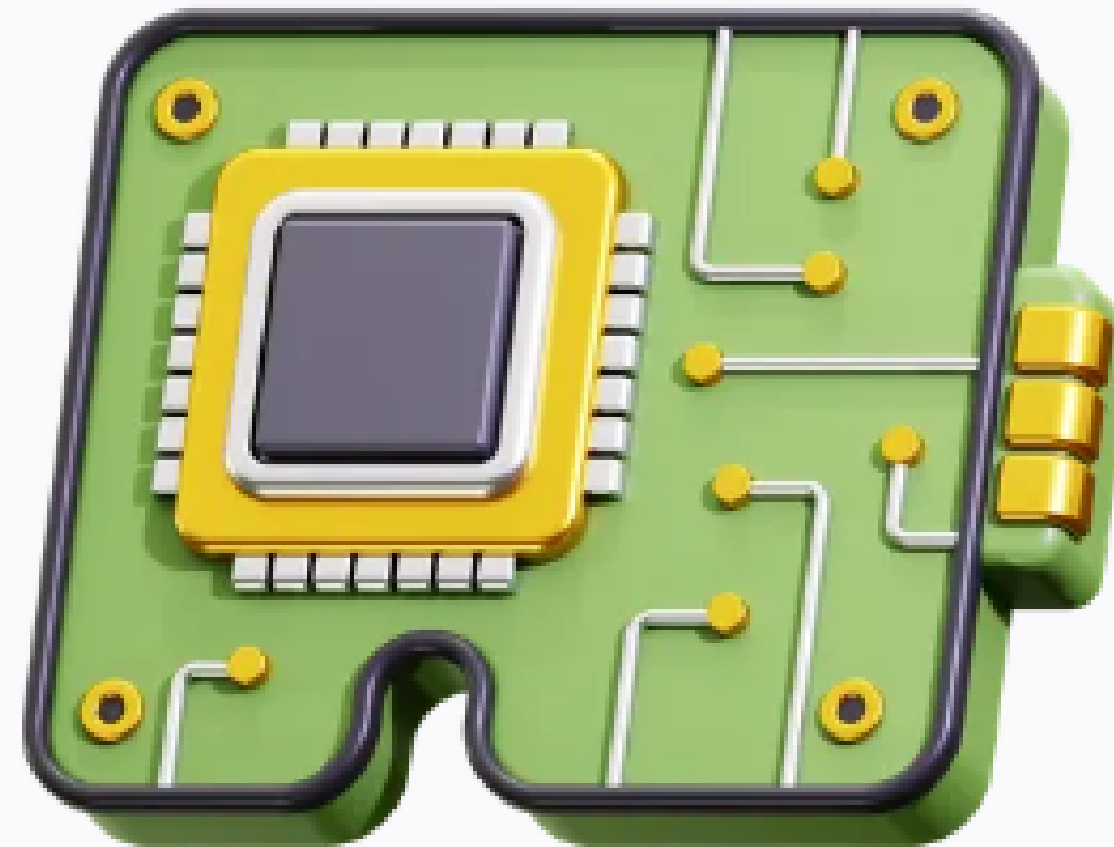
Select > wire > Dimension

BOARD DIMENSIONS



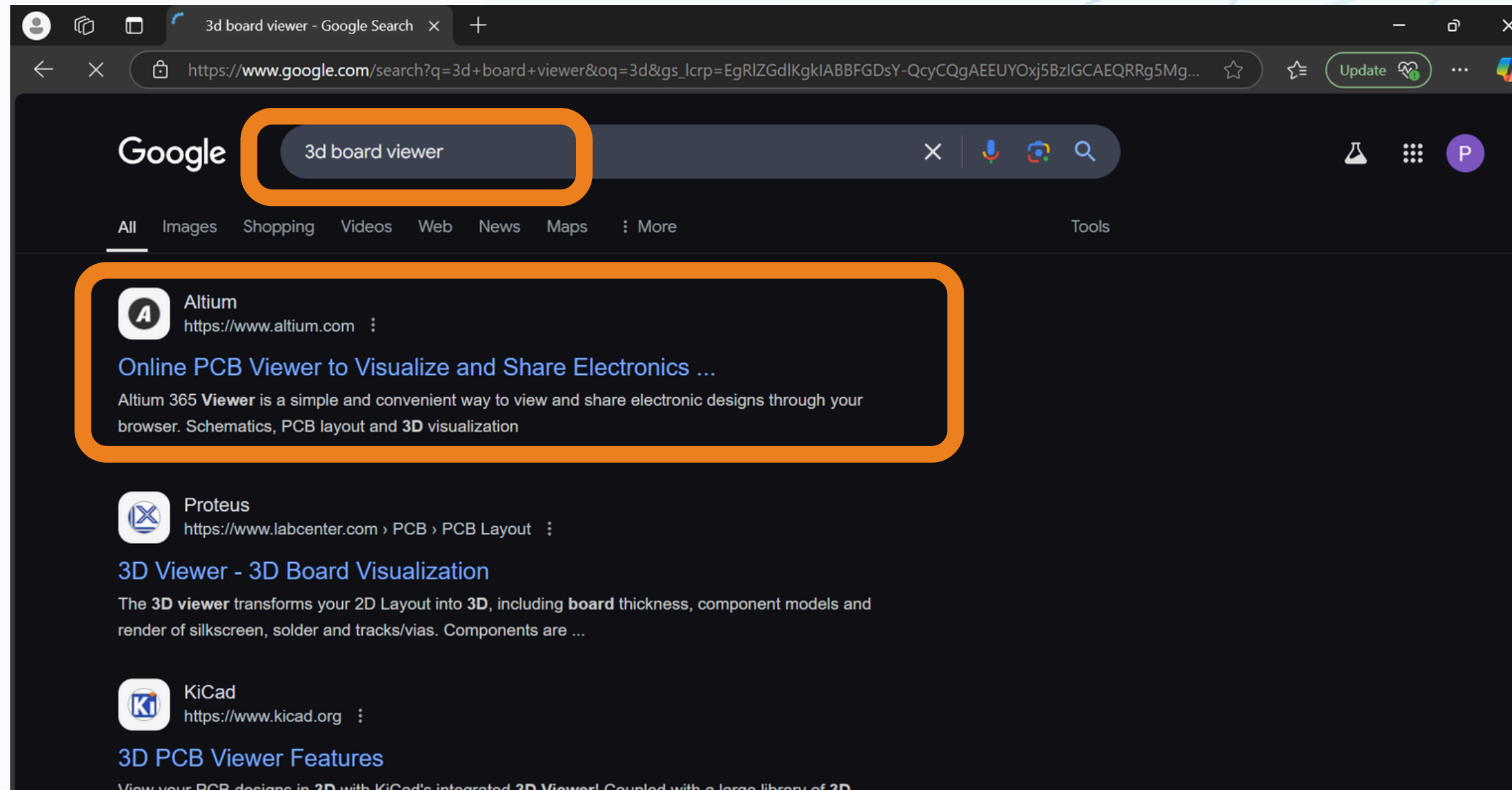
#enthutech[®]

3d Board View



#enthutech®

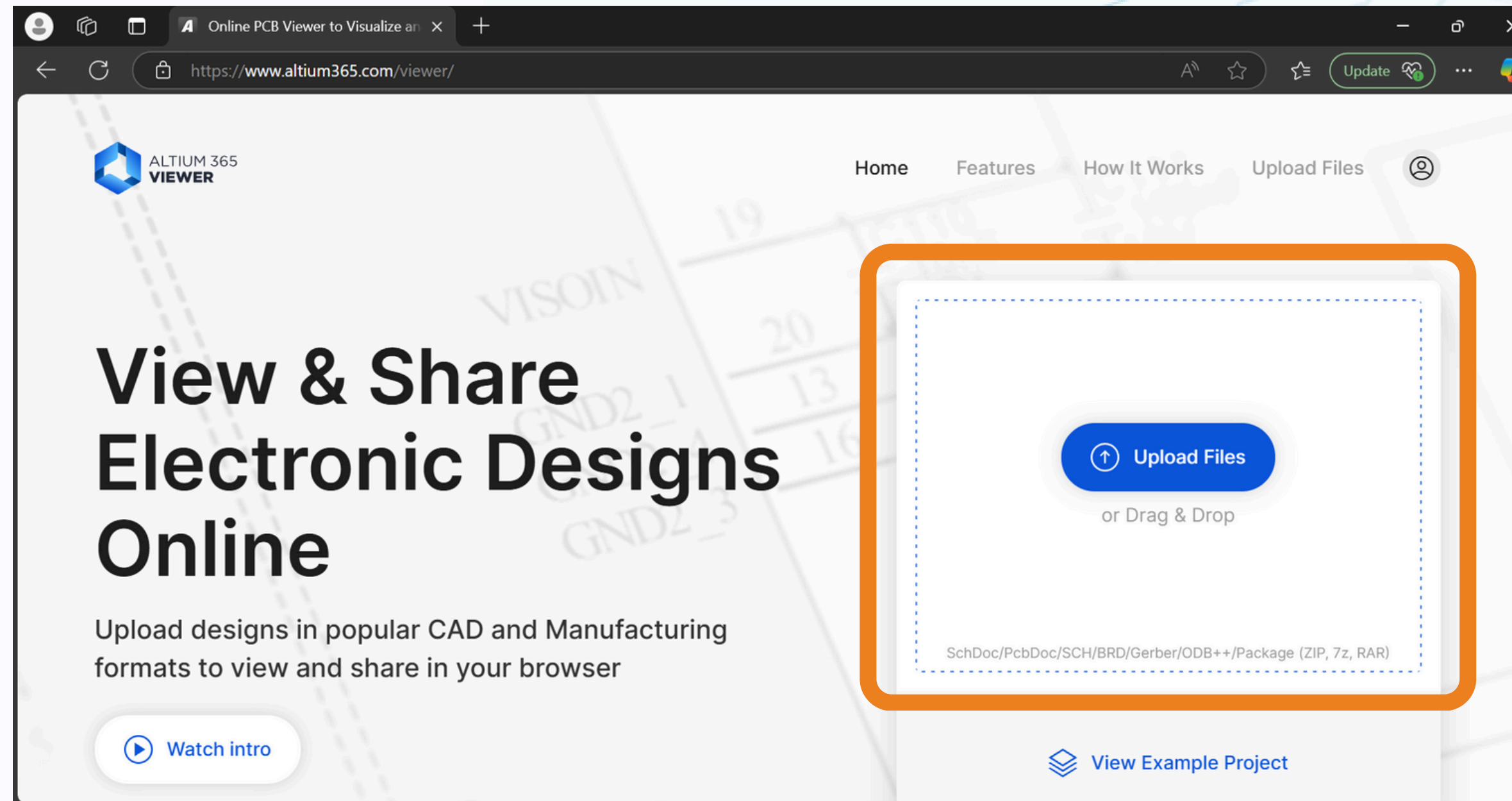
3d BOARD VIEW



**Search > 3D Board Viewer >
Altium 3D Viewer**

#enthutech®

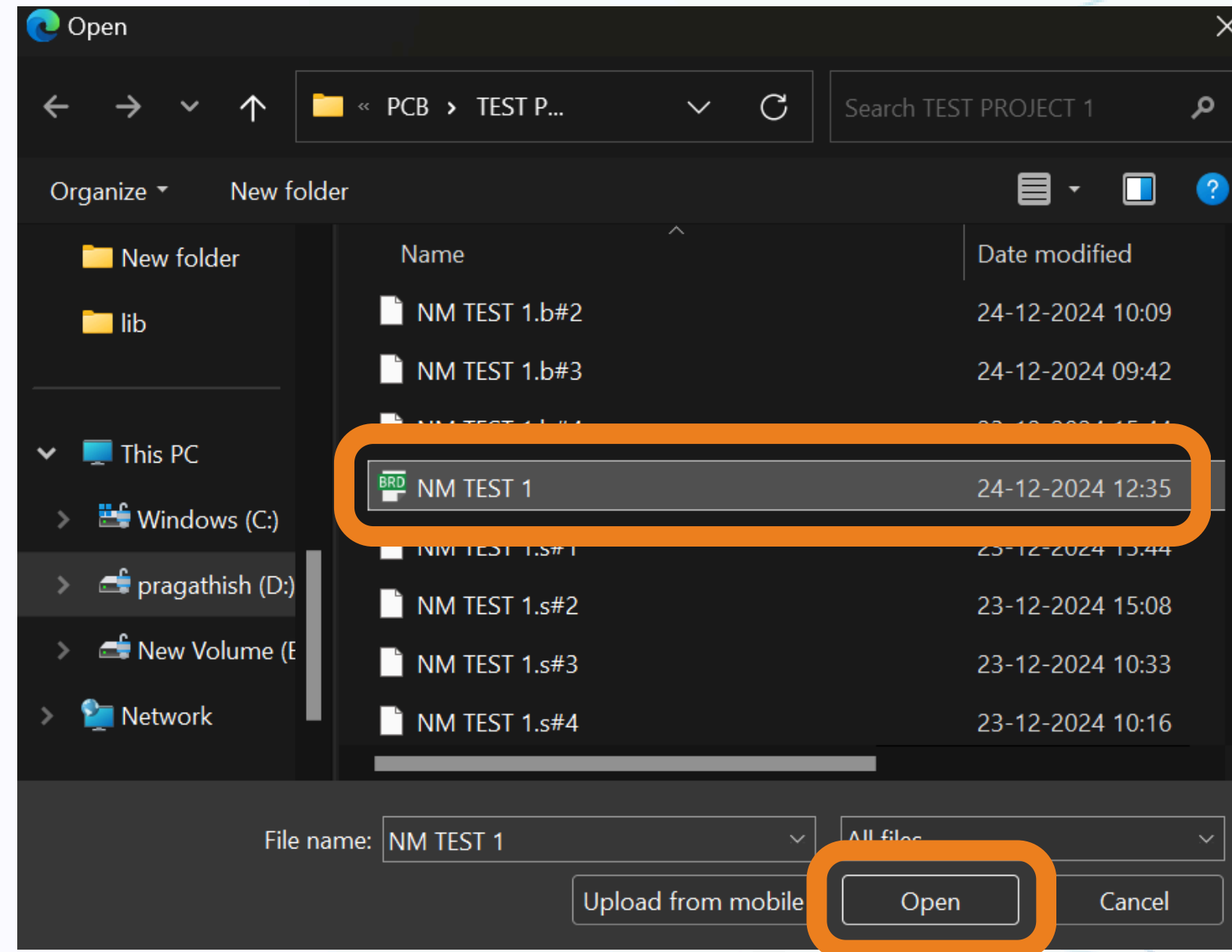
3d BOARD VIEW



Upload the Board file

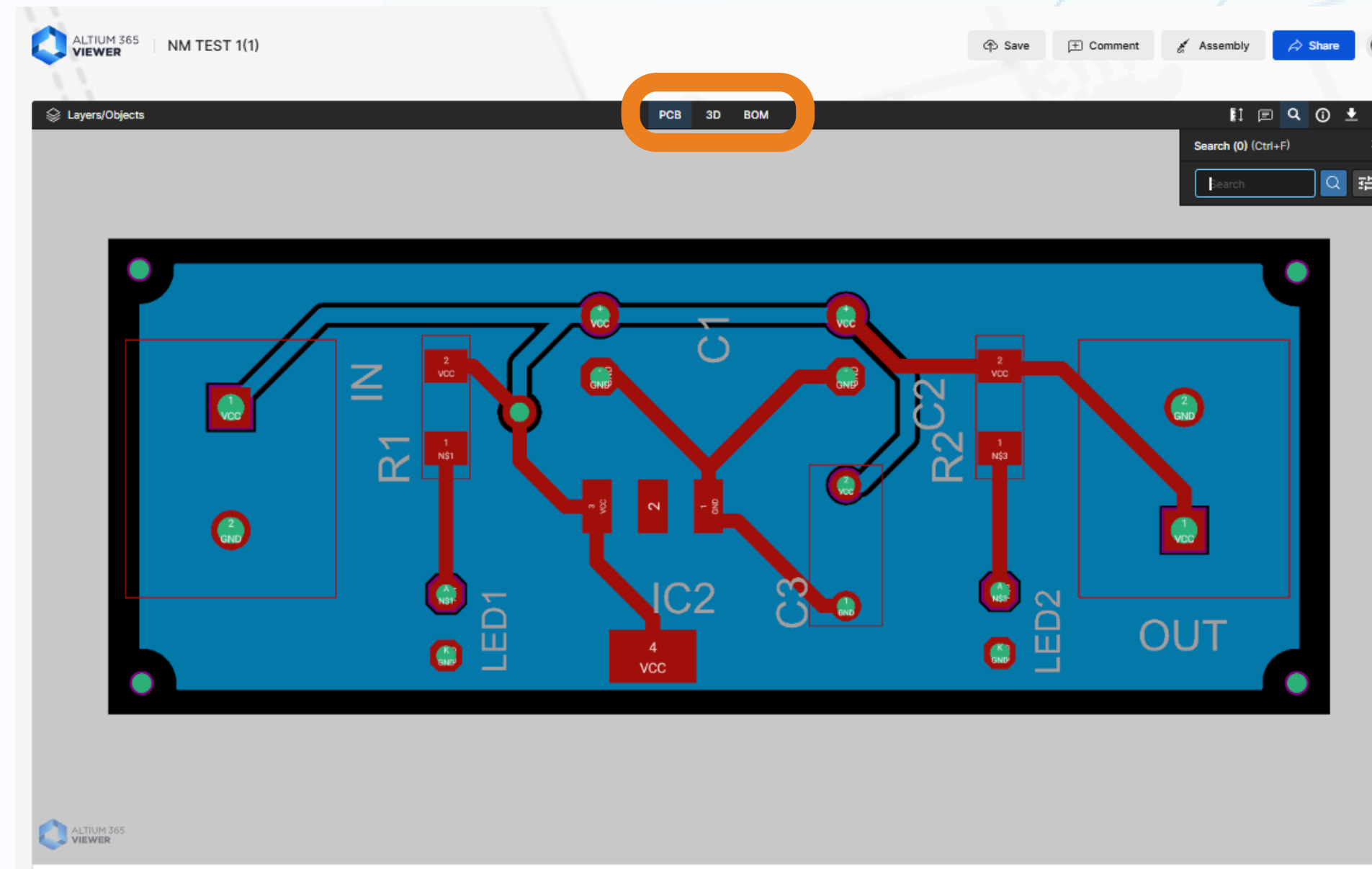
#enthutech®

3d BOARD VIEW



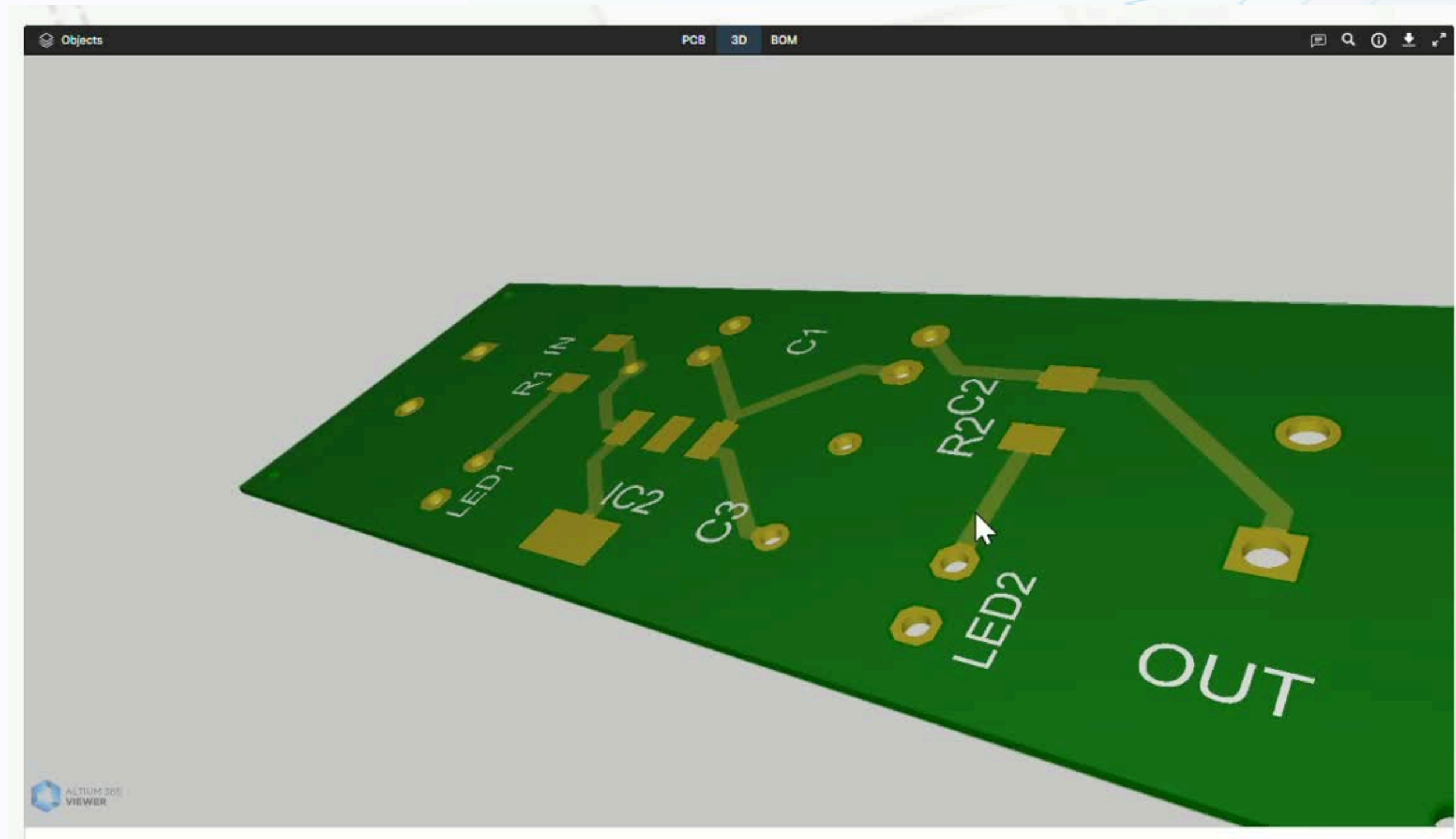
**Select > Board file >
Click Open**

3d BOARD VIEW



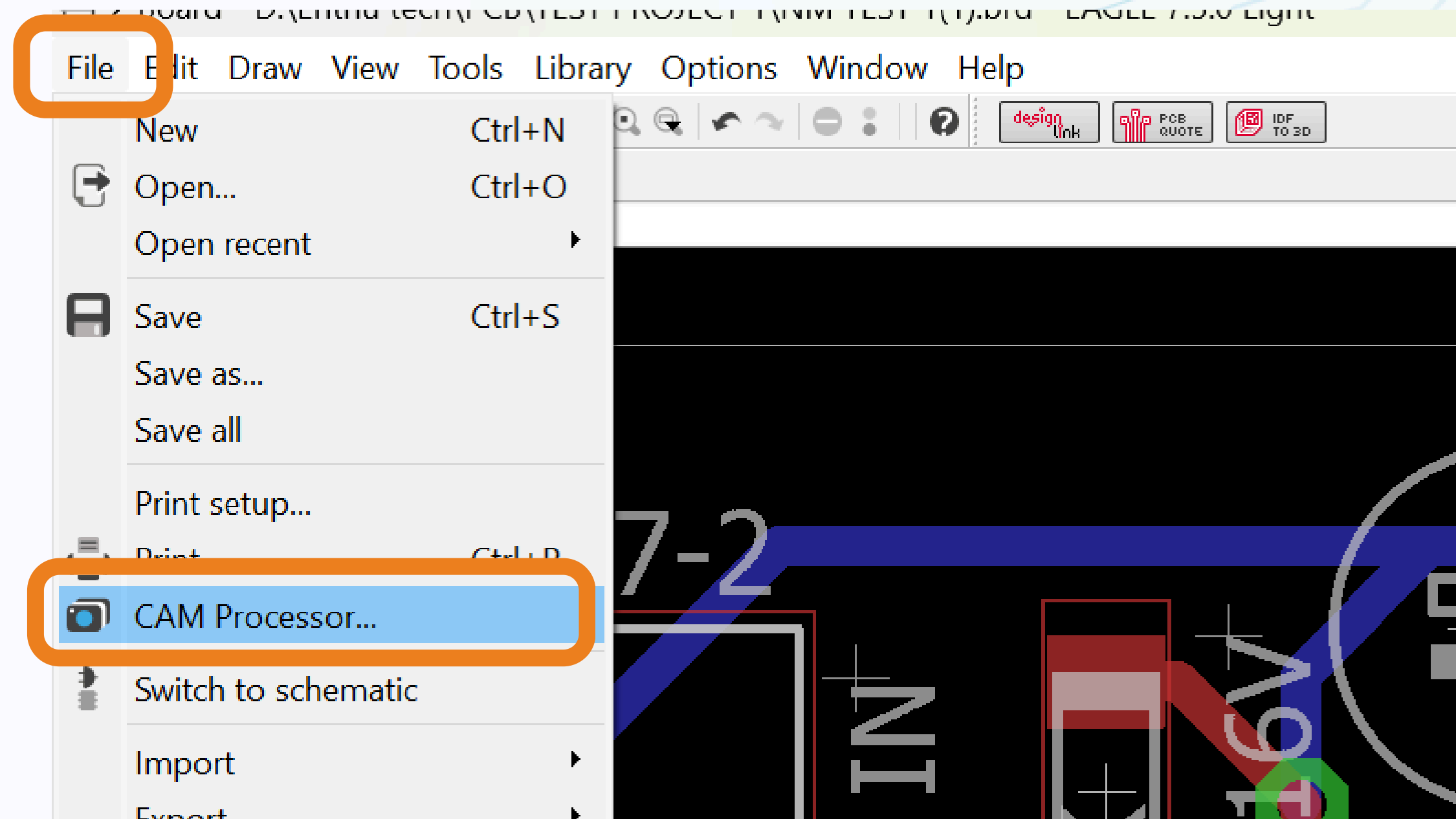
Select > 3D Option

3d BOARD VIEW



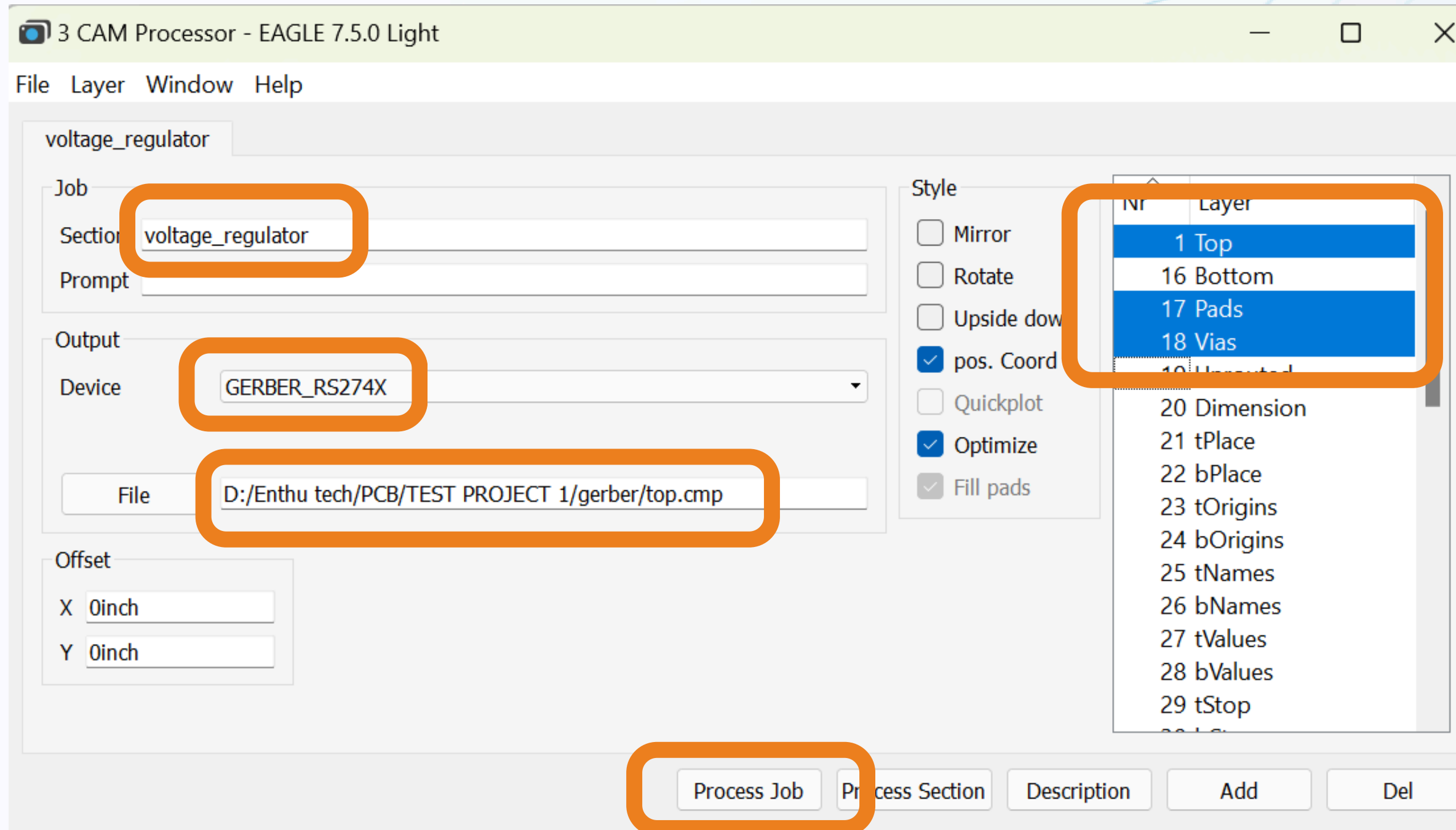
#enthutech®

GERBER file GENERATION



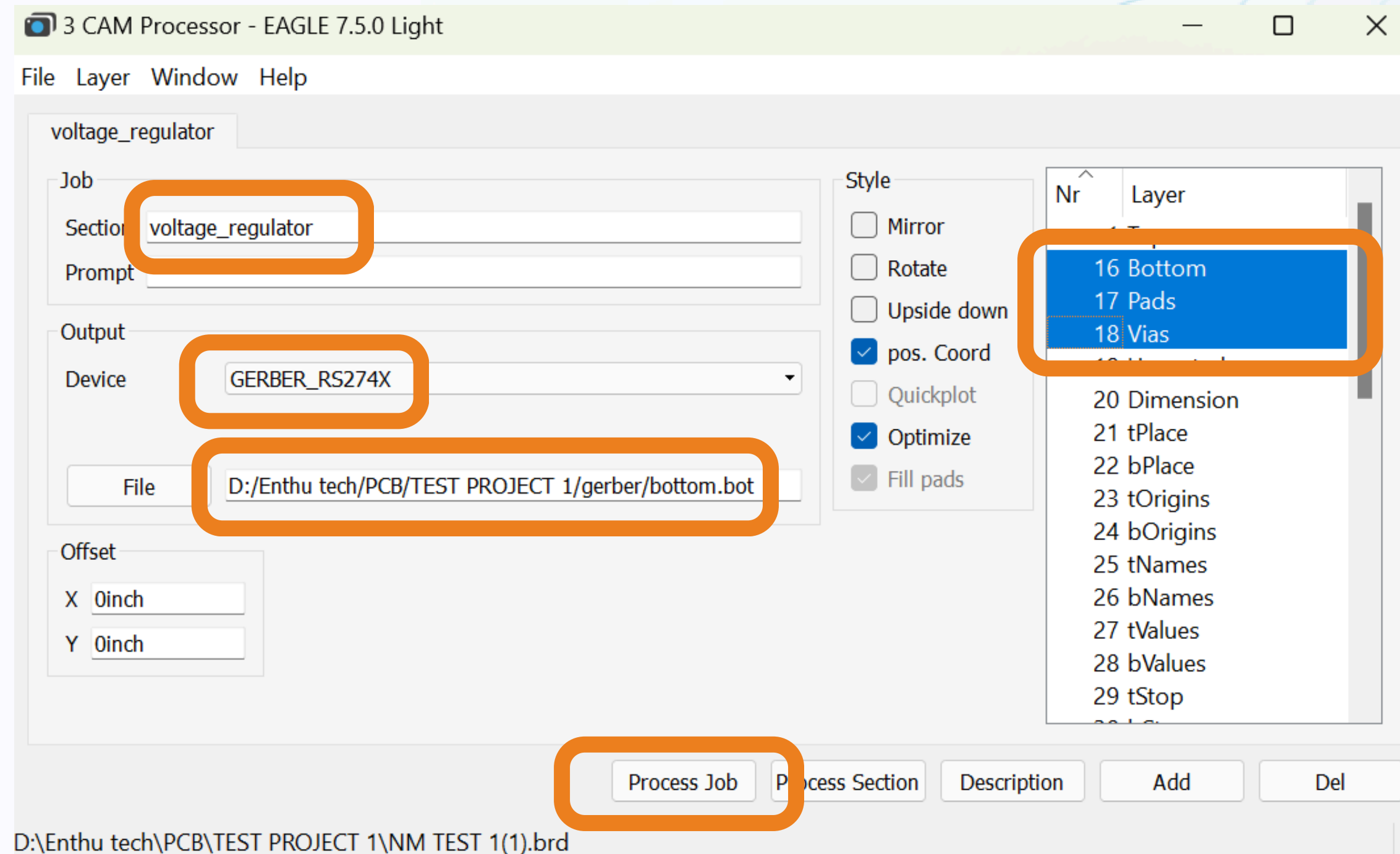
Select > File > CAM Processor

GERBER file GENERATION



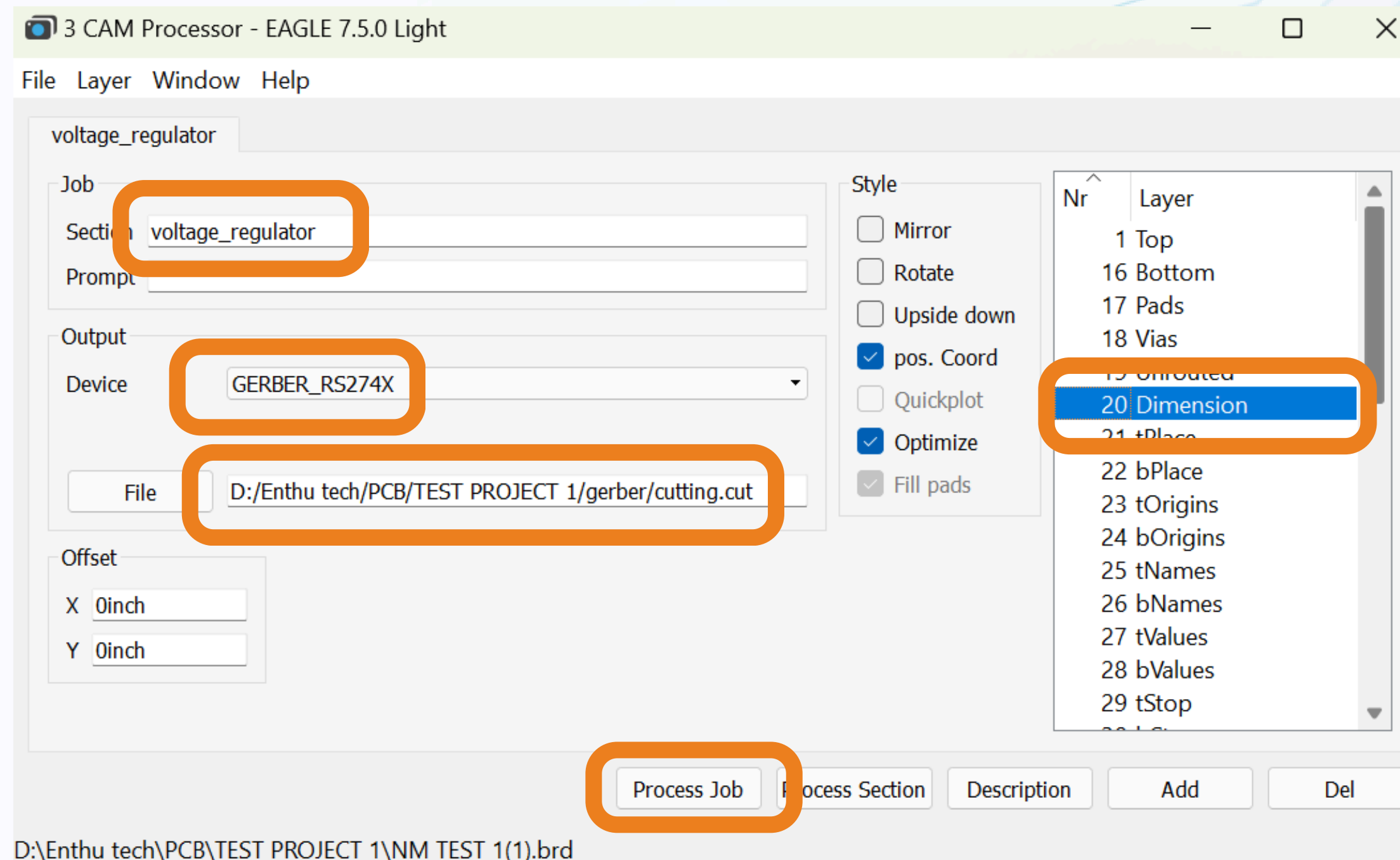
Top layer

GERBER file GENERATION



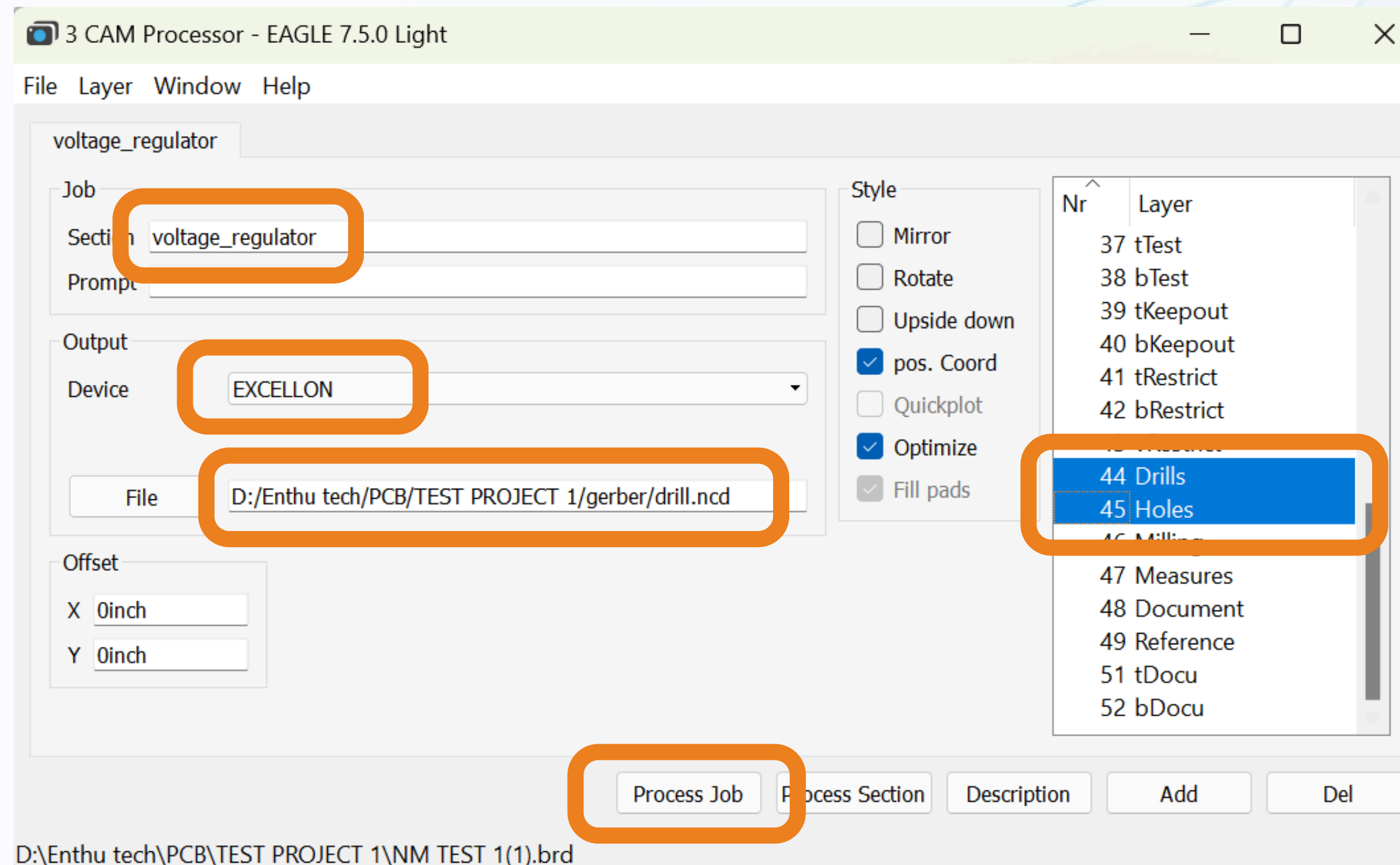
Bottom Layer

GERBER file GENERATION



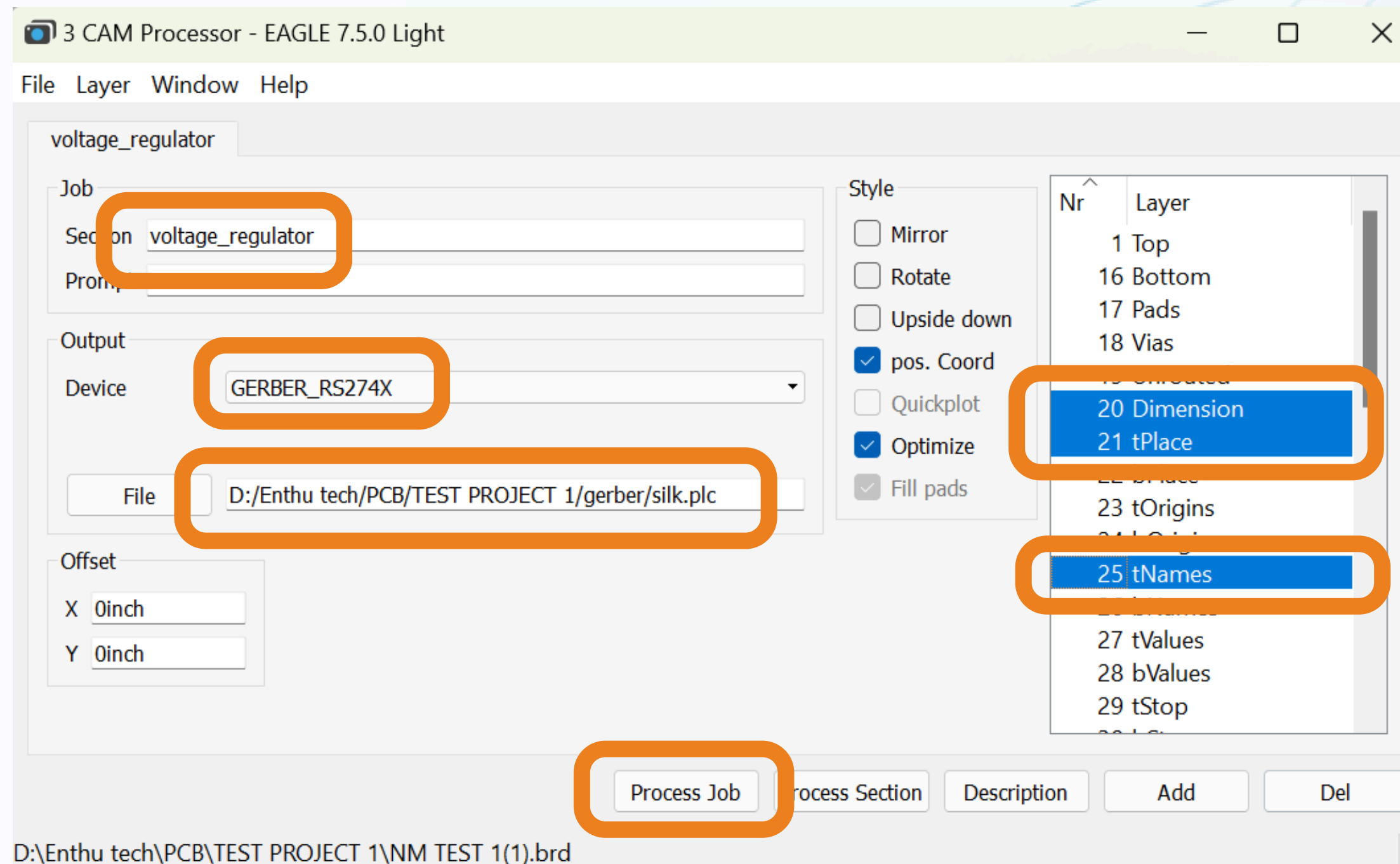
Cutting Layer

GERBER file GENERATION



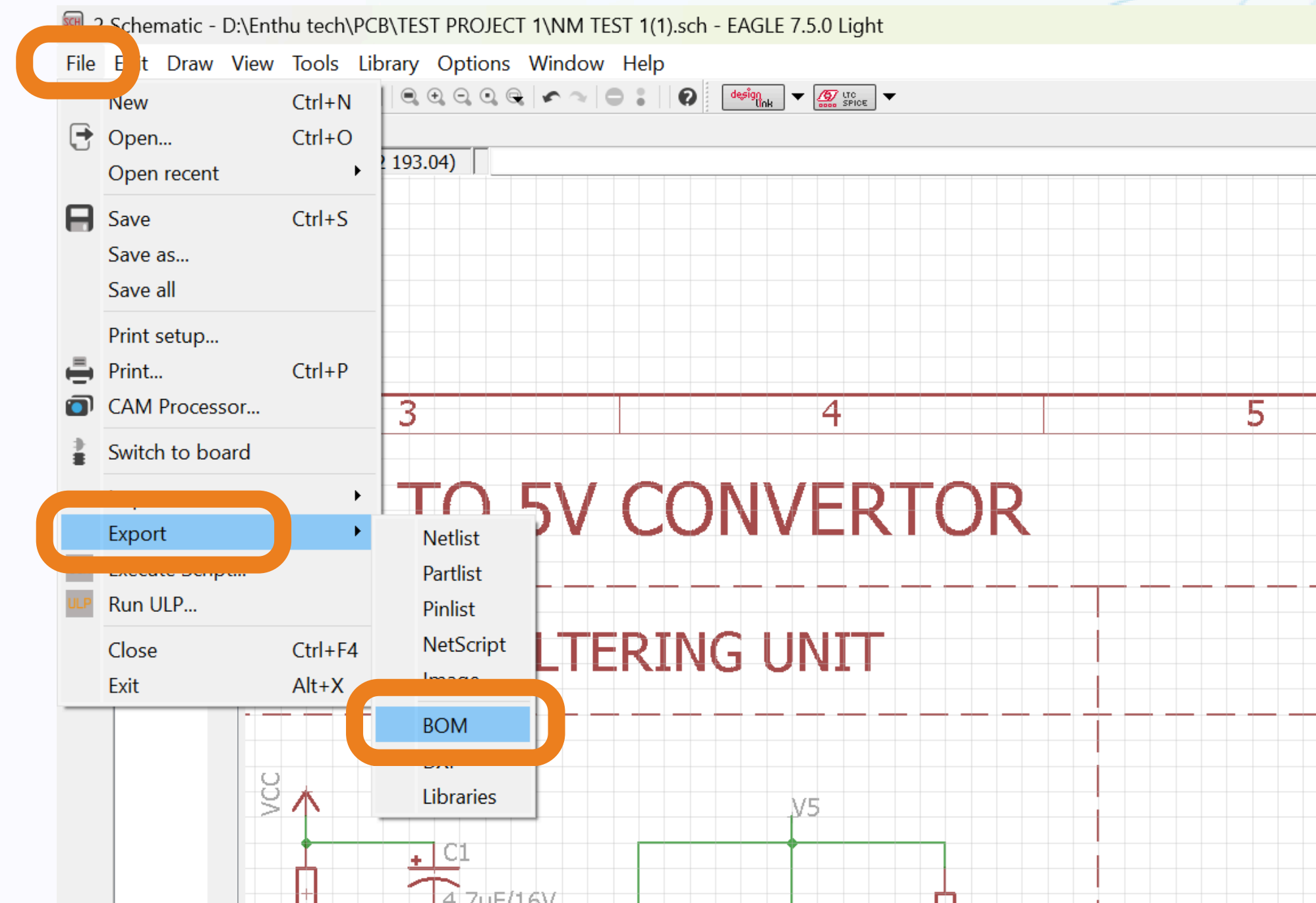
Drill Layer

GERBER file GENERATION



Silk Layer

Bill Of Materials



Select File > Export > BOM

Bill Of Materials

Eagle: Bill Of Material

Current variant: "

Qty	Value	Device	Package	Parts	Description	AVAILABILITY	CHECK_PRICES
1	0.1uF	RDER71E104K0K1H03B	CAP_RDER71E104K0K1H03B	C3	Cap Ceramic 1pF 50V COG 0.25pF Radial 5mm 125C Bulk Check availability	In Stock	https://www.snapeda.com/parts/RDER71E104K0K1H03B
1	10uF/16V	CPOL-USE2,5-6E	E2,5-6E	C2	POLARIZED CAPACITOR, American symbol		
1	317EMP	317EMP	SOT223	IC2	Positive VOLTAGE REGULATOR		
1	4.7uF/16V	CPOL-USE2,5-6E	E2,5-6E	C1	POLARIZED CAPACITOR, American symbol		
1	green	LED_ELD260	LED_LD260	LED2	LED		
1	red	LED_ELD260	LED_LD260	LED1	LED		
2	1K	R-EU_M1406	M1406	R1, R2	RESISTOR, European symbol		
2	282837-2	282837-2	TE_282837-2	IN, OUT	TERM BLOCK 5.08MM 2POS SIDE ENTY Check availability	In Stock	https://www.snapeda.com/parts/282837-2/TE+Connect

List type

☐ Parts

☒ Values

☒ List attributes

Output format

☐ Text

☒ CSV

☐ HTML

View Save... Help Close

Version 1.10

Thank You

#enthutech®